

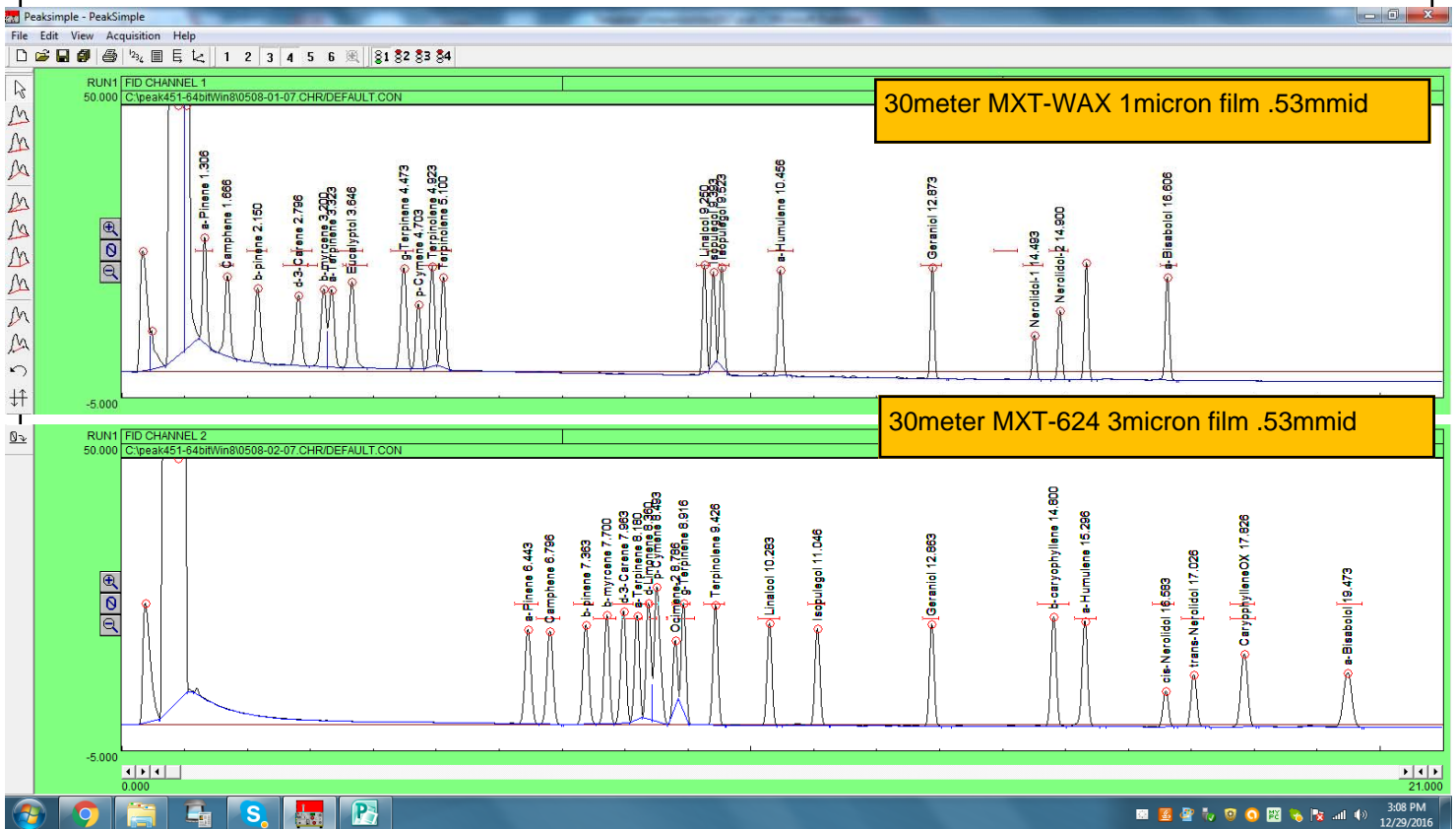
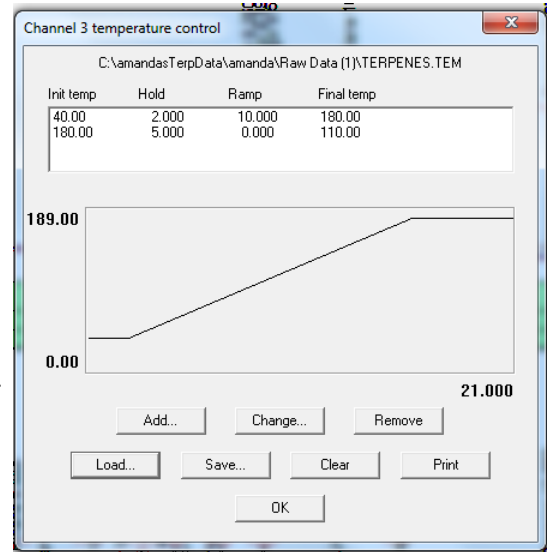
# Terpenes in Cannabis Comparison on Two Different Columns

Terpenes in cannabis can be measured on many different columns. For comparisons sake we show here the same mix of terpenes injected onto a 30 meter MXT-WAX 1micron film and a 30meter MXT-624 3micron film.

The same temperature program was used for both.

The MXT-Wax column has a maximum temperature limit of about 230C while the MXT-624 can go to 300C.

Neither one is good for cannabinoids like CBD, THC and CBN. Conceivably the MXT-624 column could also be used for measuring residual solvents, but it does not separate normal Butane from Ethanol which is fairly critical in most cases.



SRI Tech Support: 310-214-5092

www.srigc.com

TerpenesComparisonJan2017

Page 1