

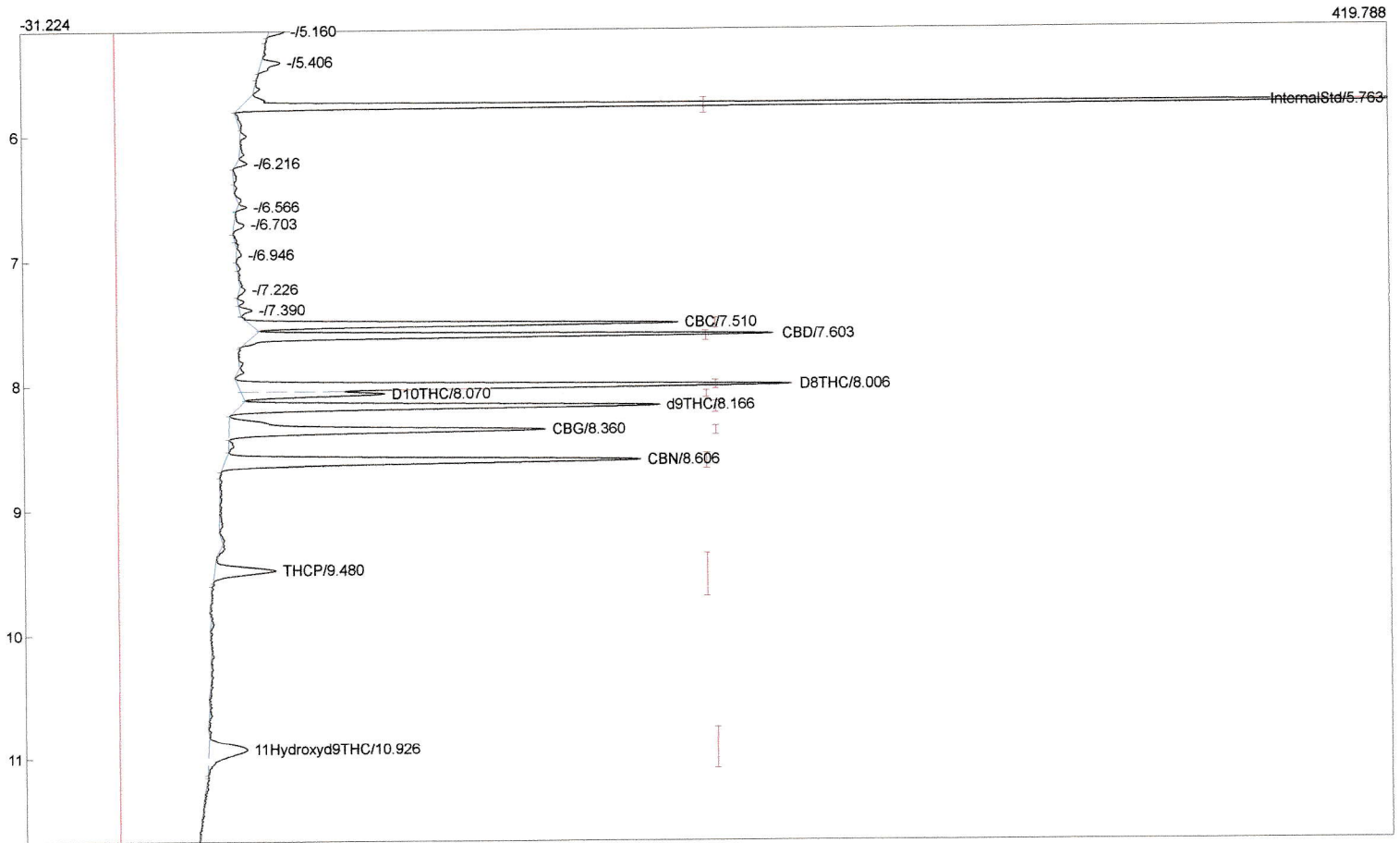
Lab name: SRI Instruments  
 Client: SRI Final test/CBD GC  
 Client ID: N11883  
 Analysis date: 02/11/2021 14:45:59  
 Method: 1ul syringe on-column  
 Description: FID 300C  
 Column: 30MXT502 1 micron+15MXT35 .15mic  
 Carrier: H2@8psi from cylinder  
 Integration: Peak sens=95.0 Base sens=60.0 Min area= 5.00 Standard= 4.000 Sample=100.000 Tangents=off  
 Data file: 333calMXT925.CHR ()  
 Sample: 9 Cannabonoids

Temperature program:

Init temp	Hold	Ramp	Final temp
150.00	0.000	25.000	300.00
300.00	10.000	0.000	300.00
125.00	1.500	25.000	150.00

Events:

Time	Event
0.000	ZERO
0.000	SOUND
2.000	INTEG IMMEDIATE
6.000	A OFF (BackFlshPrecol/Midpoint)
8.000	B OFF (OCInjector/Vent)



Component	Retention	Area	Internal	Units
InternalStd	5.763	812.4464	100.0000	
CBC	7.510	328.8455	4.9333 %	
CBD	7.603	397.5102	5.9634 %	
D8THC	8.006	482.2563	5.3117 %	
D10THC	8.070	117.2151	1.2911 %	
d9THC	8.166	380.3394	4.1892 %	
CBG	8.360	351.2638	3.9704 %	
CBN	8.606	425.2812	4.8068 %	
THCP	9.480	79.8120	0.9021 %	
11Hydroxyd9THC	10.926	88.5582	1.0009 %	
MCT Oil Peaks	16.663	152.6607	2.2842 %	
OtherOliveOilPeaks	0.000	0.0000	0.0000 %	
Triolein	0.000	0.0000	0.0000 %	
TotalOtherCannabinoids	0.000	0.0000	0.0000 %	
		3616.2088	134.6531	

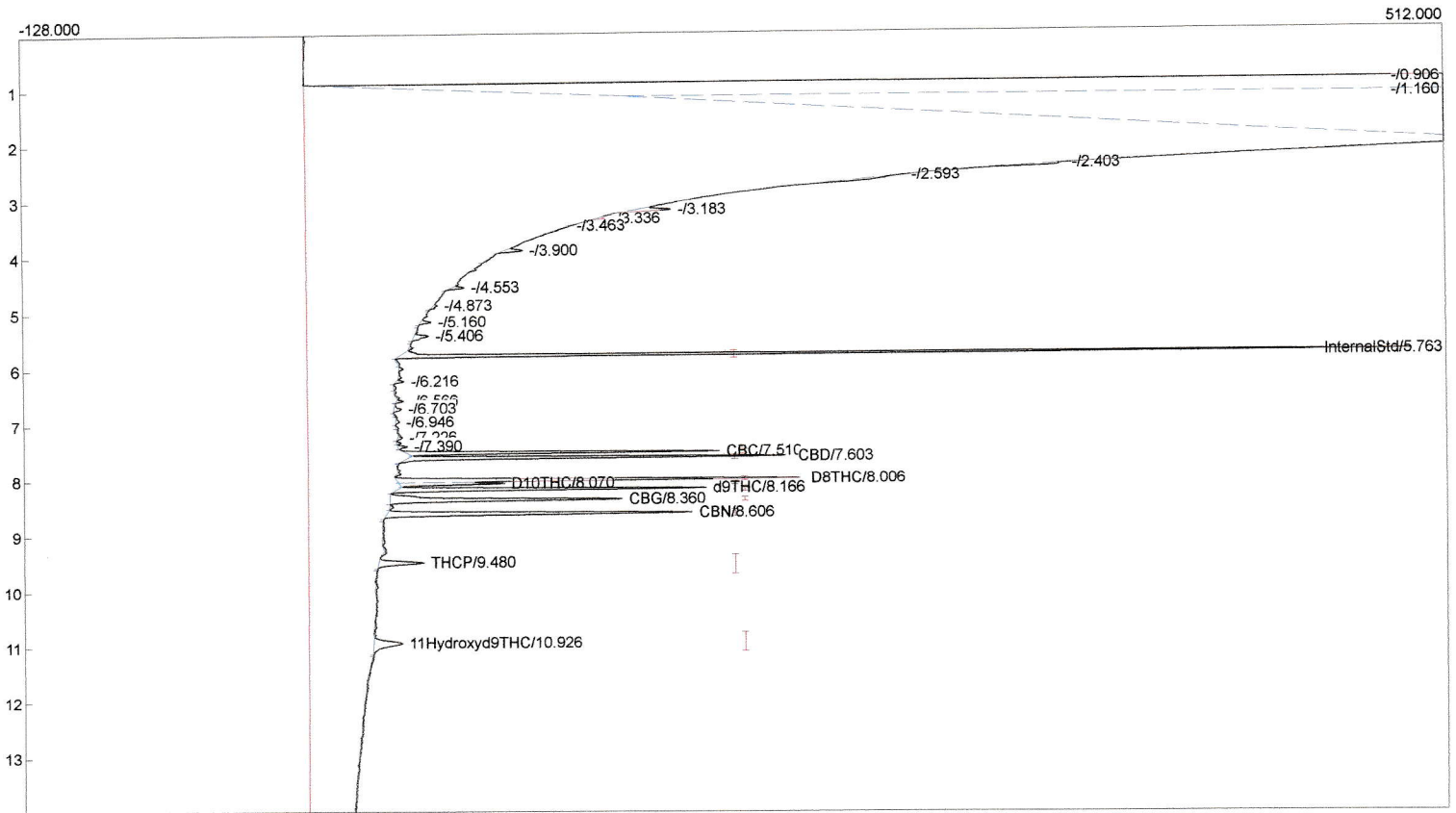
Lab name: SRI Instruments  
 Client: SRI Final test/CBD GC  
 Client ID: N11883  
 Analysis date: 02/11/2021 14:45:59  
 Method: 1ul syringe on-column  
 Description: FID 300C  
 Column: 30MXT502 1 micron+15MXT35 .15mic  
 Carrier: H2@8psi from cylinder  
 Integration: Peak sens=95.0 Base sens=60.0 Min area= 5.00 Standard= 4.000 Sample=100.000 Tangents=off  
 Data file: 333calMXT925.CHR ()  
 Sample: 9 Cannabonoids

Temperature program:

Init temp	Hold	Ramp	Final temp
150.00	0.000	25.000	300.00
300.00	10.000	0.000	300.00
125.00	1.500	25.000	150.00

Events:

Time	Event
0.000	ZERO
0.000	SOUND
2.000	INTEG IMMEDIATE
6.000	A OFF (BackFlshPrecol/Midpoint)
8.000	B OFF (OCInjectorVent)



Component	Retention	Area	Internal	Units
InternalStd	5.763	812.4464	100.0000	
CBC	7.510	328.8455	4.9333	%
CBD	7.603	397.5102	5.9634	%
D8THC	8.006	482.2563	5.3117	%
D10THC	8.070	117.2151	1.2911	%
d9THC	8.166	380.3394	4.1892	%
CBG	8.360	351.2838	3.9704	%
CBN	8.606	425.2812	4.8068	%
THCP	9.480	79.8120	0.9021	%
11Hydroxyd9THC	10.926	88.5582	1.0009	%
MCT Oil Peaks	16.663	152.6607	2.2842	%
OtherOliveOilPeaks	0.000	0.0000	0.0000	%
Triolein	0.000	0.0000	0.0000	%
TotalOtherCannabinoids	0.000	0.0000	0.0000	%
		3616.2088	134.6531	