

Lab name: SRI

Client: Jupeng Bio

Client ID: N12243

Analysis date: 04/27/2022 13:14:52

Method: Valve

Description: TCD - low gain

Column: 6' MSSA + 18" HSD

Carrier: Ar @ 13psi

Integration: Peak sens=95.0 Base sens=60.0 Min area= 10.00 Standard= 4.000 Sample=107.000 Tangents=off

Data file: Overnight Test205.CHR ()

Sample: 1% mix - Run 1 - G OFF at 0.75

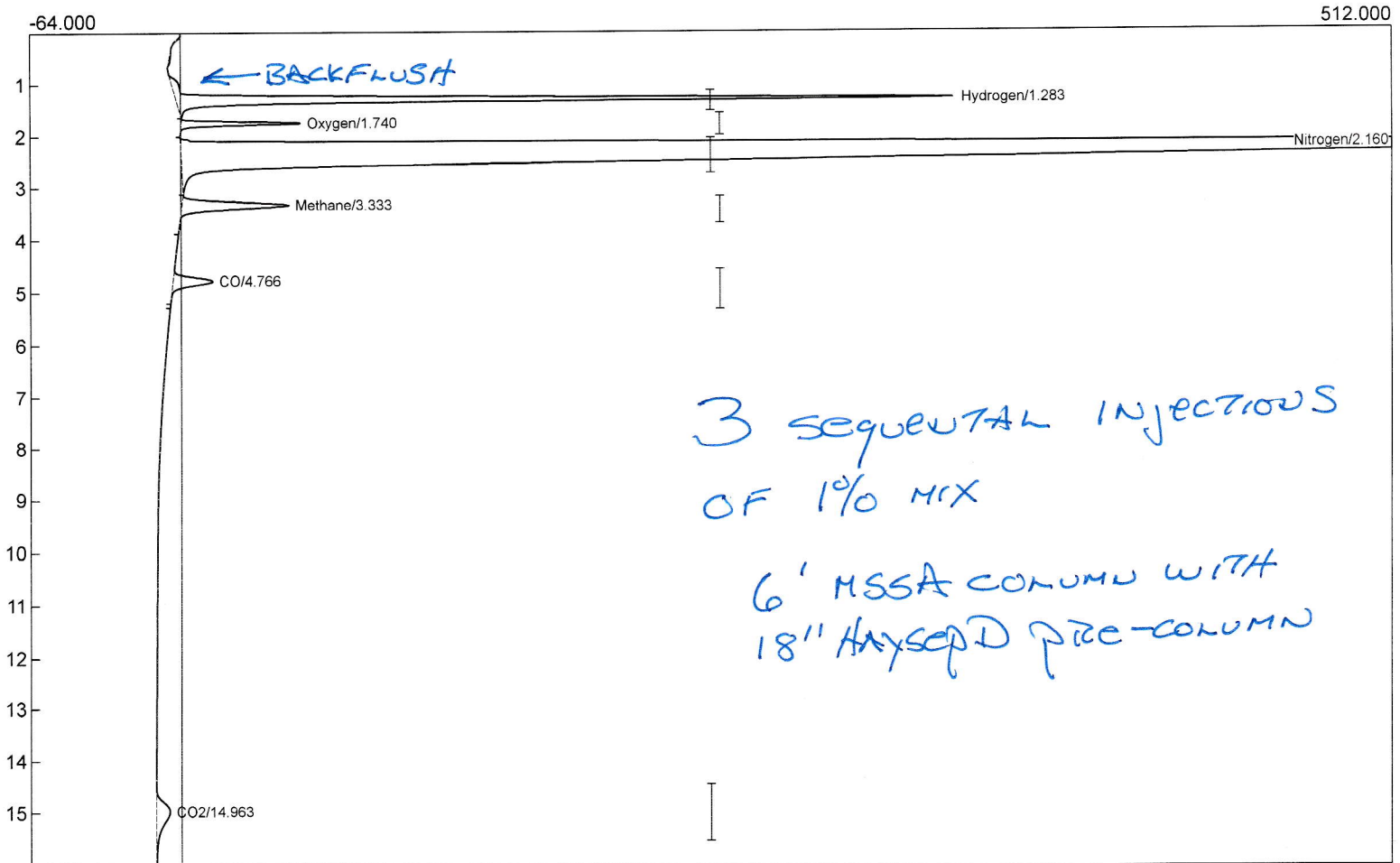
Comments: H2=16psi Air1=5 Air2=5  
ox=150 meth=300

Temperature program:

Init temp	Hold	Ramp	Final temp
90.00	2.000	30.000	270.00
270.00	10.000	0.000	270.00
50.00	1.000	20.000	90.00

Events:

Time	Event
0.000	ZERO
0.020	G ON (Valve1Rotate)
0.750	G OFF (Valve1Rotate) ← BACKFLUSH PRE-COLUMN
4.100	INTEG IMMEDIATE
6.000	INTEG IMMEDIATE



Component	Retention	Area	Internal	Units
Hydrogen	1.283	1879.3908	0.0000	
Oxygen	1.740	220.1569	0.0000	
Nitrogen	2.160	13152.2672	0.0000	
Methane	3.333	419.3229	0.0000	
CO	4.766	171.9142	0.0000	
CO2	14.963	180.4146	0.0000	
		16023.4666	0.0000	

CO2 %RSD = 0.57

180.41

178.65

178.62

$\bar{x} = 179.226$

SD = 1.024

%RSD = 0.57

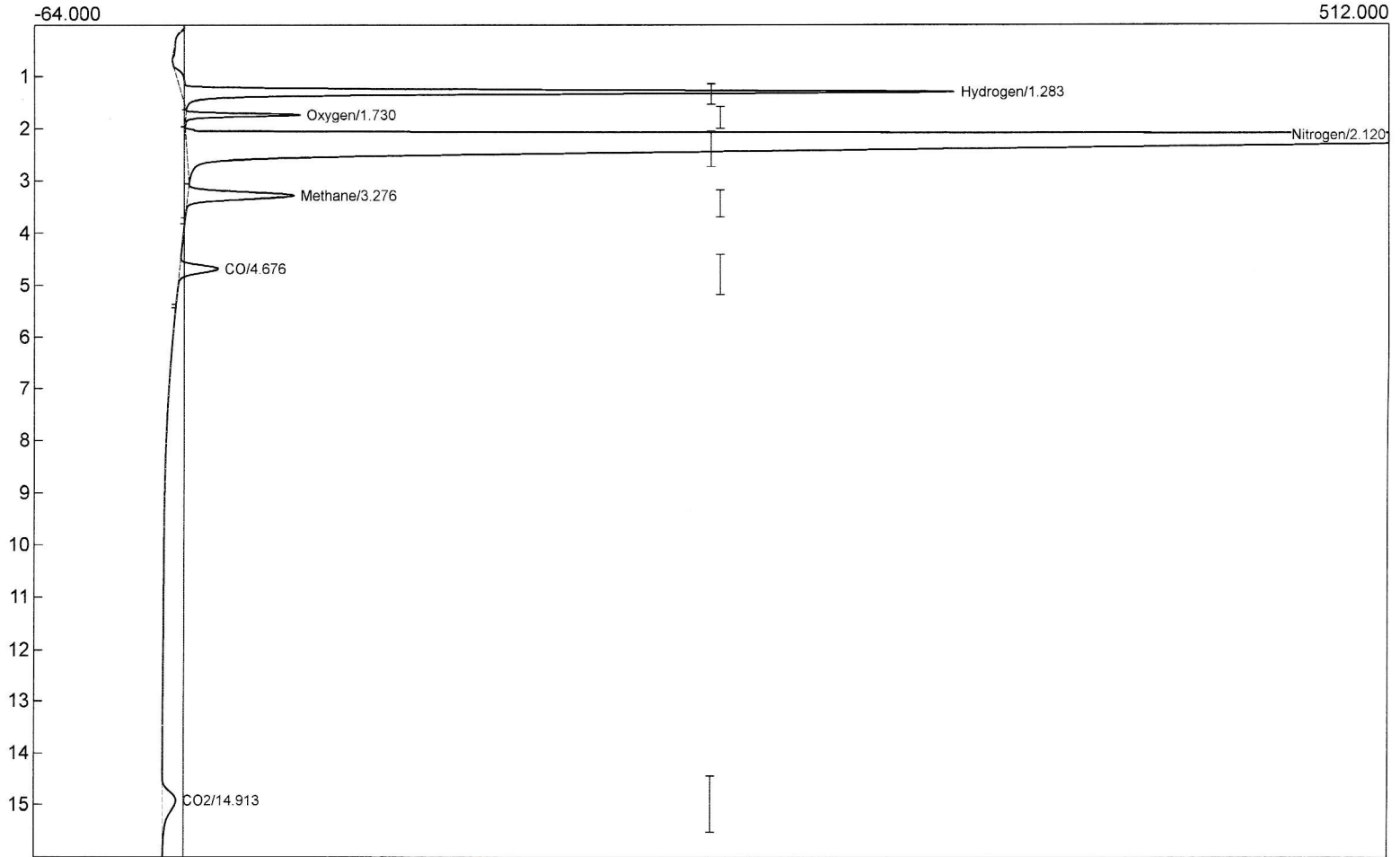
Lab name: SRI  
 Client: Jupeng Bio  
 Client ID: N12243  
 Analysis date: 04/27/2022 13:36:39  
 Method: Valve  
 Description: TCD - low gain  
 Column: 6' MS5A + 18' HSD  
 Carrier: Ar @ 13psi  
 Integration: Peak sens=95.0 Base sens=60.0 Min area= 10.00 Standard= 4.000 Sample=107.000 Tangents=off  
 Data file: Overnight Test206.CHR ()  
 Sample: 1% mix - Run 2 - G OFF at 0.75  
 Comments: H2=16psi Air1=5 Air2=5  
 ox=150 meth=300

Temperature program:

Init temp	Hold	Ramp	Final temp
90.00	2.000	30.000	270.00
270.00	10.000	0.000	270.00
50.00	1.000	20.000	90.00

Events:

Time	Event
0.000	ZERO
0.020	G ON (Valve1Rotate)
0.750	G OFF (Valve1Rotate)
4.100	INTEG IMMEDIATE
6.000	INTEG IMMEDIATE



Component	Retention	Area	Internal	Units
Hydrogen	1.283	1887.3128	0.0000	
Oxygen	1.730	211.5510	0.0000	
Nitrogen	2.120	13199.8826	0.0000	
Methane	3.276	418.9488	0.0000	
CO	4.676	171.1562	0.0000	
CO2	14.913	178.6478	0.0000	
		16067.4992	0.0000	

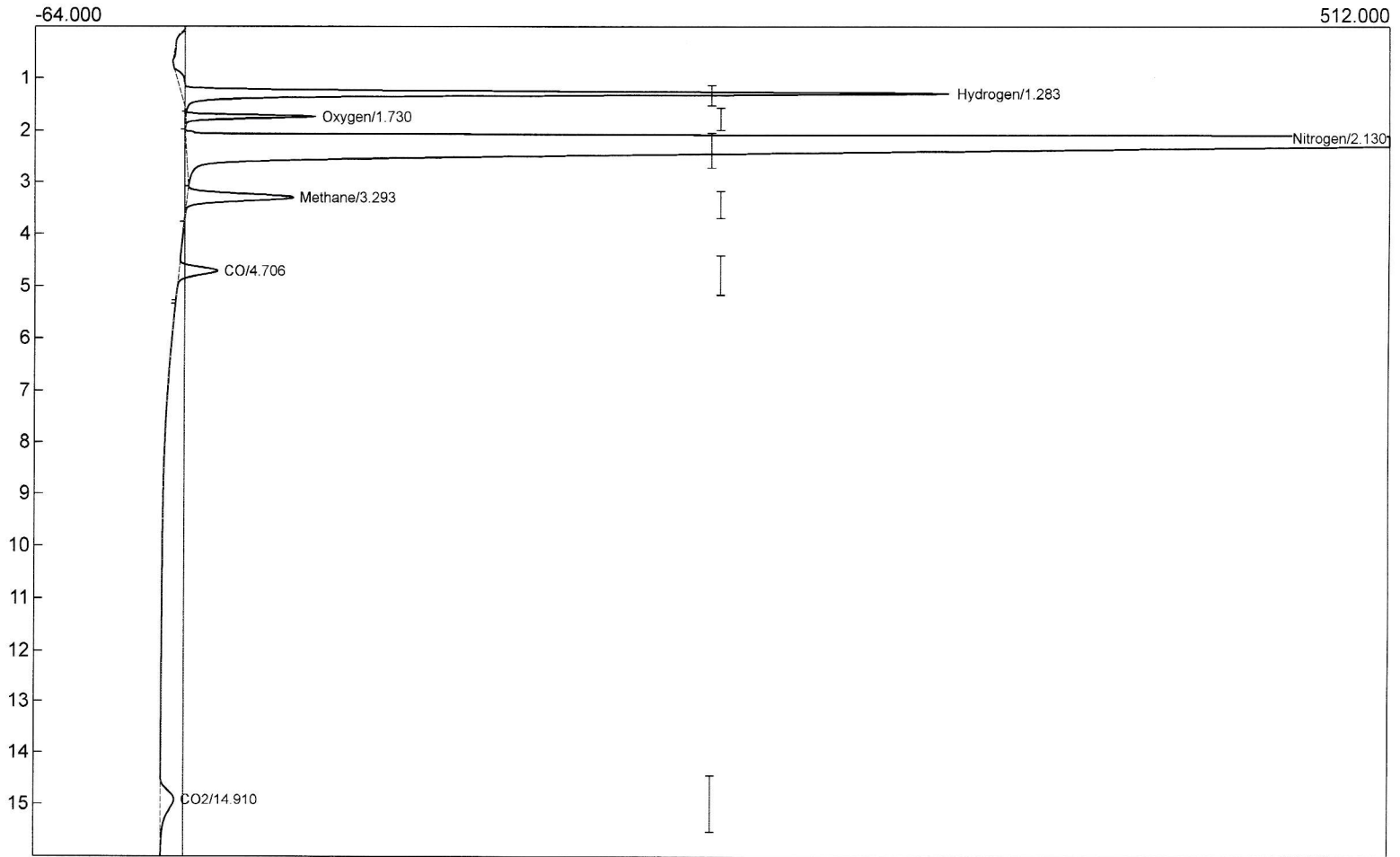
Lab name: SRI  
 Client: Jupeng Bio  
 Client ID: N12243  
 Analysis date: 04/27/2022 13:58:35  
 Method: Valve  
 Description: TCD - low gain  
 Column: 6' MS5A + 18" HSD  
 Carrier: Ar @ 13psi  
 Integration: Peak sens=95.0 Base sens=60.0 Min area= 10.00 Standard= 4.000 Sample=107.000 Tangents=off  
 Data file: Overnight Test207.CHR ()  
 Sample: 1% mix - Run 3 - G OFF at 0.75  
 Comments: H2=16psi Air1=5 Air2=5  
 ox=150 meth=300

Temperature program:

Init temp	Hold	Ramp	Final temp
90.00	2.000	30.000	270.00
270.00	10.000	0.000	270.00
50.00	1.000	20.000	90.00

Events:

Time	Event
0.000	ZERO
0.020	G ON (Valve1Rotate)
0.750	G OFF (Valve1Rotate)
4.100	INTEG IMMEDIATE
6.000	INTEG IMMEDIATE



Component	Retention	Area	Internal	Units
Hydrogen	1.283	1875.2342	0.0000	
Oxygen	1.730	239.8652	0.0000	
Nitrogen	2.130	13221.8726	0.0000	
Methane	3.293	418.1746	0.0000	
CO	4.706	170.7004	0.0000	
CO2	14.910	178.6176	0.0000	
		16104.4646	0.0000	