

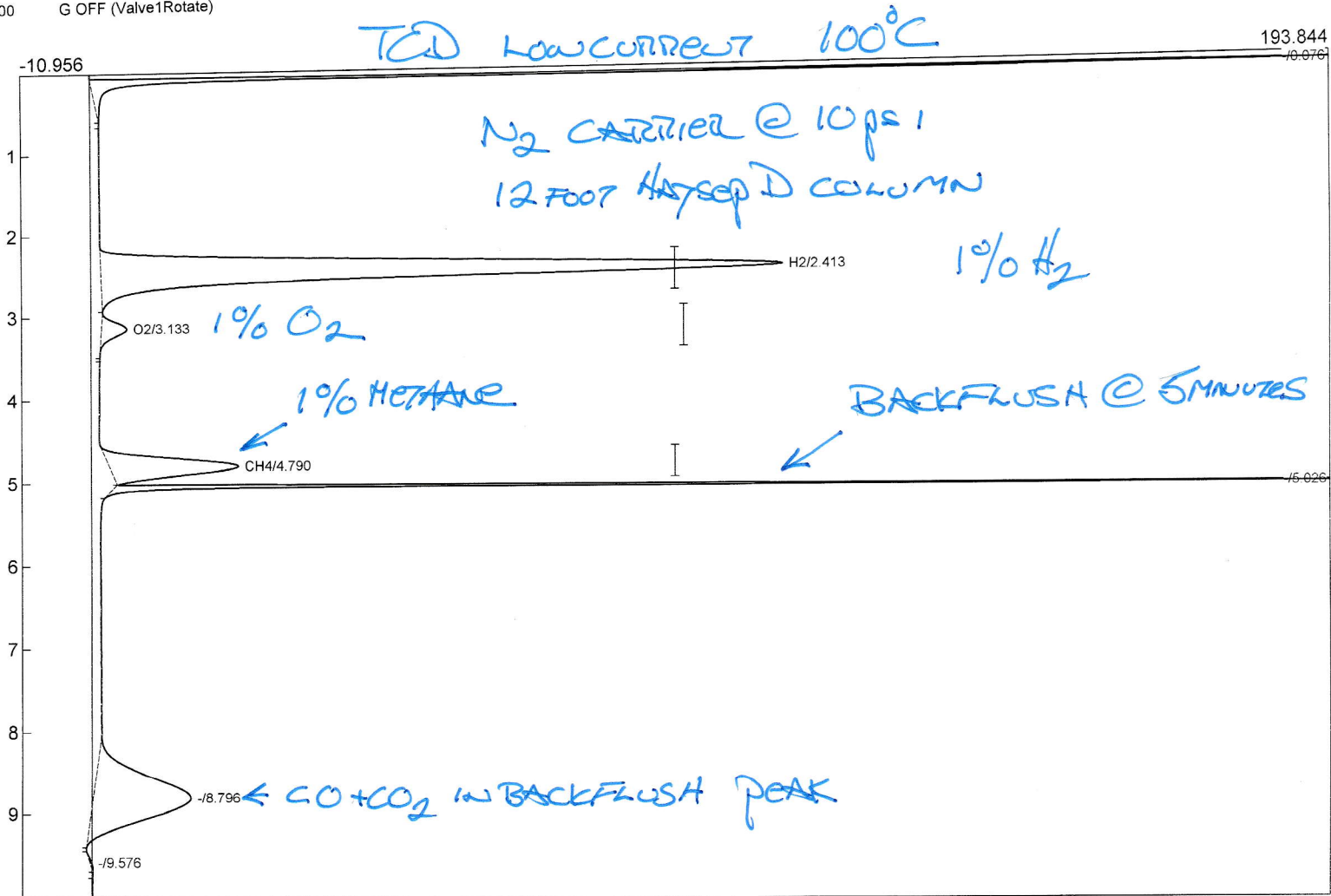
Lab name: SRI final test
 Client ID: N12119
 Analysis date: 08/18/2022 14:45:17
 Method: Valve injection
 Description: TCD Low Gain
 Column: 12' HayeSep D
 Carrier: N2 @ 10 psi
 Integration: Peak sens=95.0 Base sens=60.0 Min area= 2.00 Standard= 1.000 Sample= 1.000 Tangents=off
 Data file: Sterigenics116.CHR ()
 Sample: 1% Mix

Temperature program:

Init temp	Hold	Ramp	Final temp
50.00	10.000	0.000	50.00

Events:

Time	Event
0.000	ZERO
0.000	SOUND
0.050	G ON (Valve1Rotate)
1.000	INTEG IMMEDIATE
5.000	G OFF (Valve1Rotate)



Component	Retention	Area	Internal	Units	Alarm
H2	2.413	1441.5264	1.0077	%	
O2	3.133	47.8756	5.1552	%	
CH4	4.790	269.2312	1.0162	%	
		1758.6332	7.1791		

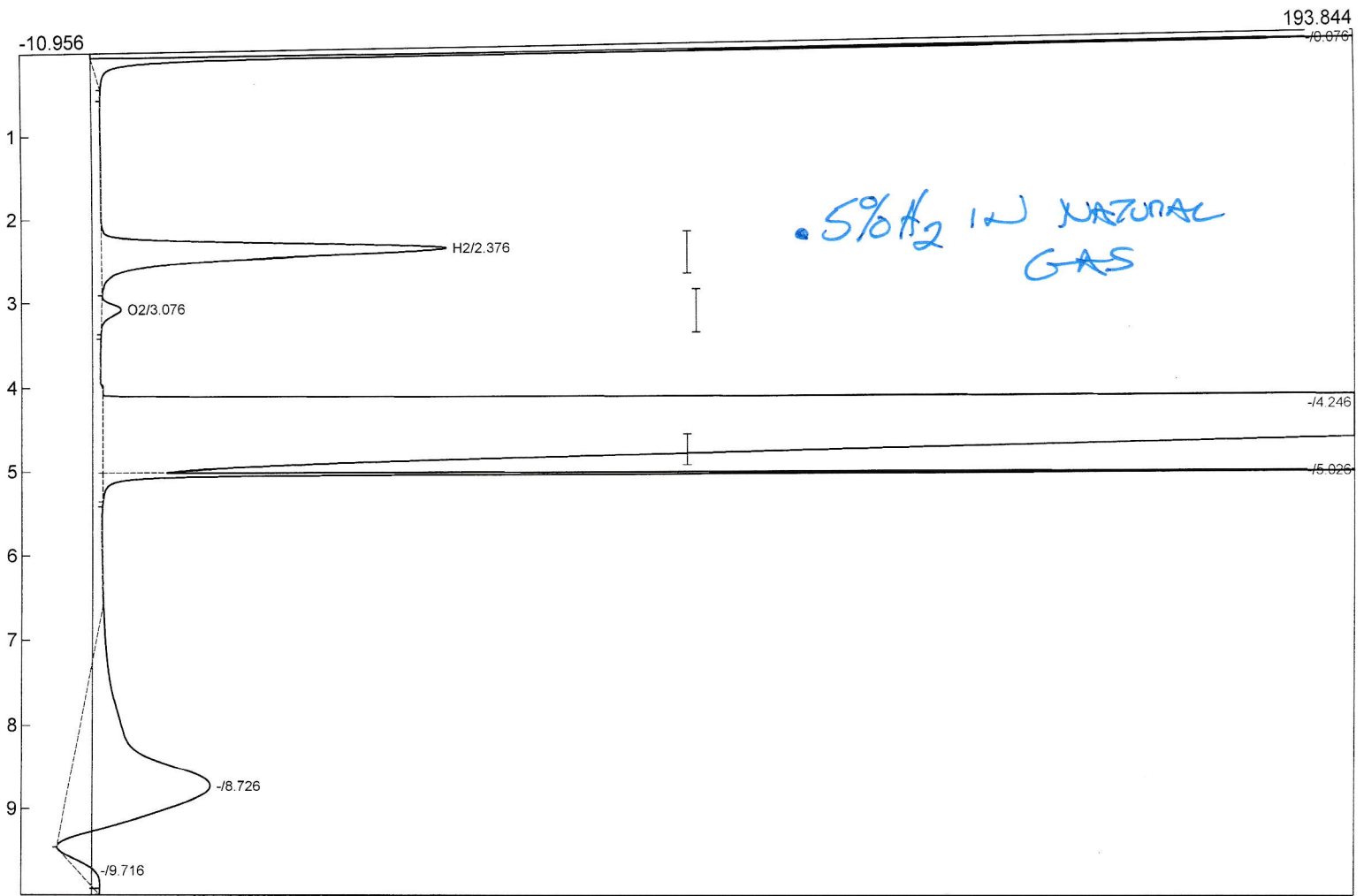
Lab name: SRI final test
 Client ID: N12119
 Analysis date: 08/18/2022 14:57:08
 Method: Valve injection
 Description: TCD Low Gain
 Column: 12' HayeSep D
 Carrier: N2 @ 10 psi
 Integration: Peak sens=95.0 Base sens=60.0 Min area= 2.00 Standard= 1.000 Sample= 1.000 Tangents=off
 Data file: Sterigenics117.CHR ()
 Sample: 1% Mix mixed with Nat Gas

Temperature program:

Init temp	Hold	Ramp	Final temp
50.00	10.000	0.000	50.00

Events:

Time	Event
0.000	ZERO
0.000	SOUND
0.050	G ON (Valve1Rotate)
1.000	INTEG IMMEDIATE
5.000	G OFF (Valve1Rotate)



Component	Retention	Area	Internal	Units	Alarm
H2	2.376	639.0864	0.4468	%	
O2	3.076	29.1676	3.1408	%	
CH4	0.000	0.0000	0.0000	%	
		668.2540	3.5875		

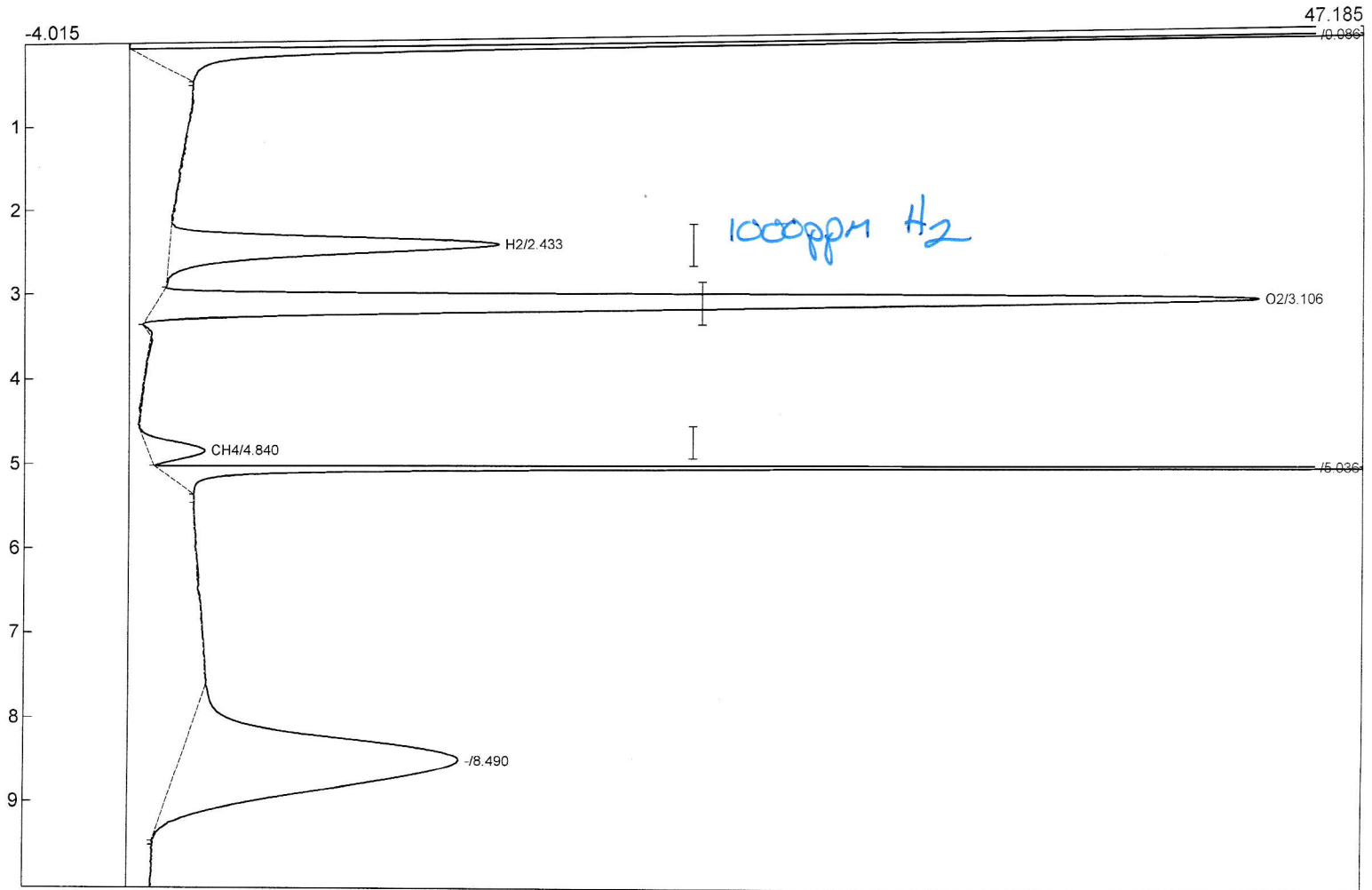
Lab name: SRI final test
 Client ID: N12119
 Analysis date: 08/18/2022 13:09:38
 Method: Valve injection
 Description: TCD Low Gain
 Column: 12' HayeSep D
 Carrier: N2 @ 10 psi
 Integration: Peak sens=95.0 Base sens=60.0 Min area= 2.00 Standard= 1.000 Sample= 1.000 Tangents=off
 Data file: Sterigenics110.CHR ()
 Sample: 0.1% Mix Diluted in Room Air

Temperature program:

Init temp	Hold	Ramp	Final temp
50.00	10.000	0.000	50.00

Events:

Time	Event
0.000	ZERO
0.000	SOUND
0.050	G ON (Valve1Rotate)
1.000	INTEG IMMEDIATE
5.000	G OFF (Valve1Rotate)



Component	Retention	Area	Internal	Units	Alarm
H2	2.433	176.4934	0.1234	%	
O2	3.106	458.0040	49.3177	%	
CH4	4.840	27.6487	0.1044	%	
		662.1461	49.5455		

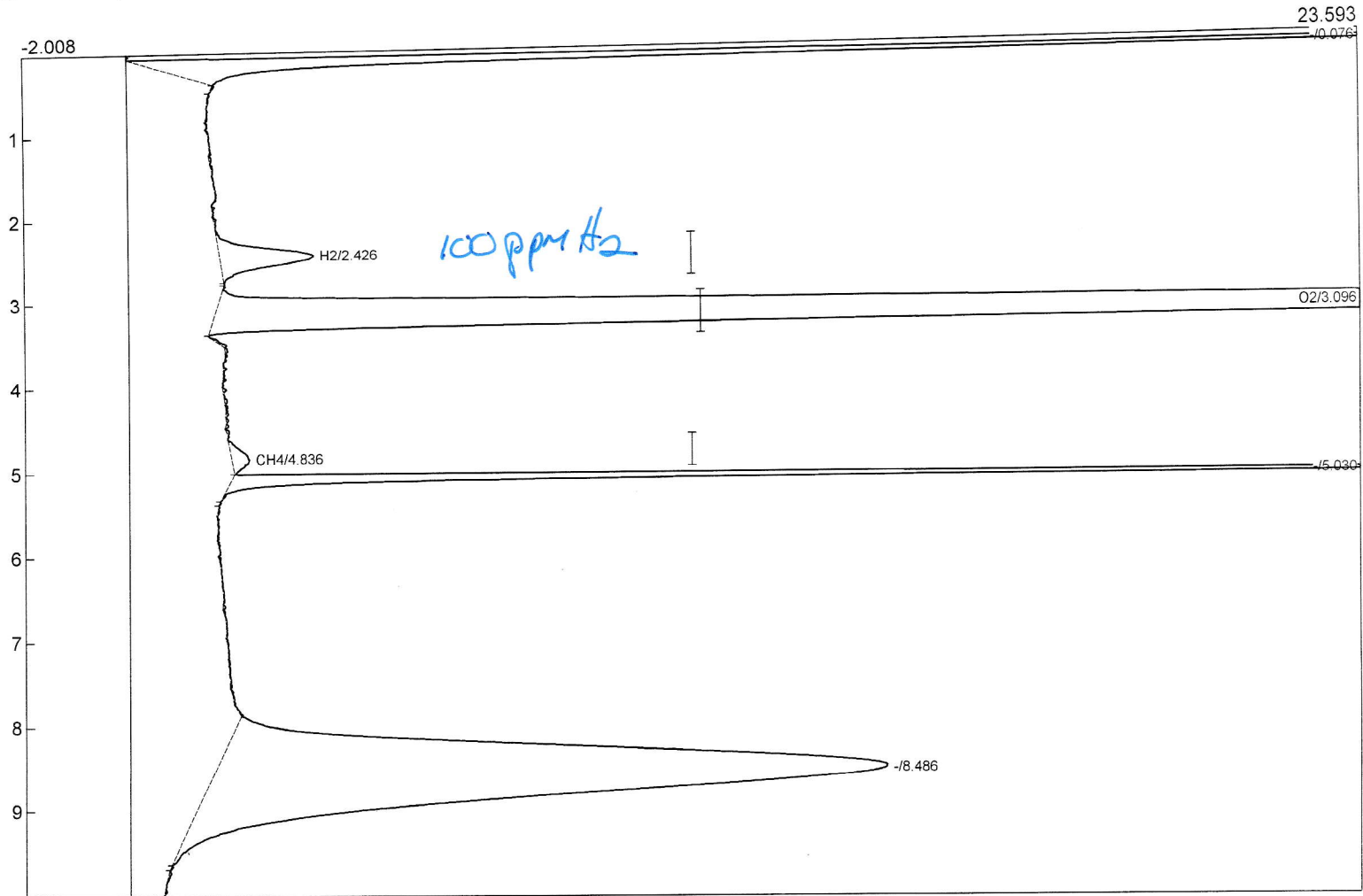
Lab name: SRI final test
 Client ID: N12119
 Analysis date: 08/18/2022 13:31:20
 Method: Valve injection
 Description: TCD Low Gain
 Column: 12' HayeSep D
 Carrier: N2 @ 10 psi
 Integration: Peak sens=95.0 Base sens=60.0 Min area= 2.00 Standard= 1.000 Sample= 1.000 Tangents=off
 Data file: Sterigenics111.CHR ()
 Sample: 0.01% Mix Diluted in Room Air

Temperature program:

Init temp	Hold	Ramp	Final temp
50.00	10.000	0.000	50.00

Events:

Time	Event
0.000	ZERO
0.000	SOUND
0.050	G ON (Valve1Rotate)
1.000	INTEG IMMEDIATE
5.000	G OFF (Valve1Rotate)



Component	Retention	Area	Internal	Units	Alarm
H2	2.426	25.9316	0.0181	%	
O2	3.096	636.2164	68.5076	%	
CH4	4.836	4.5826	0.0173	%	
		666.7306	68.5430		

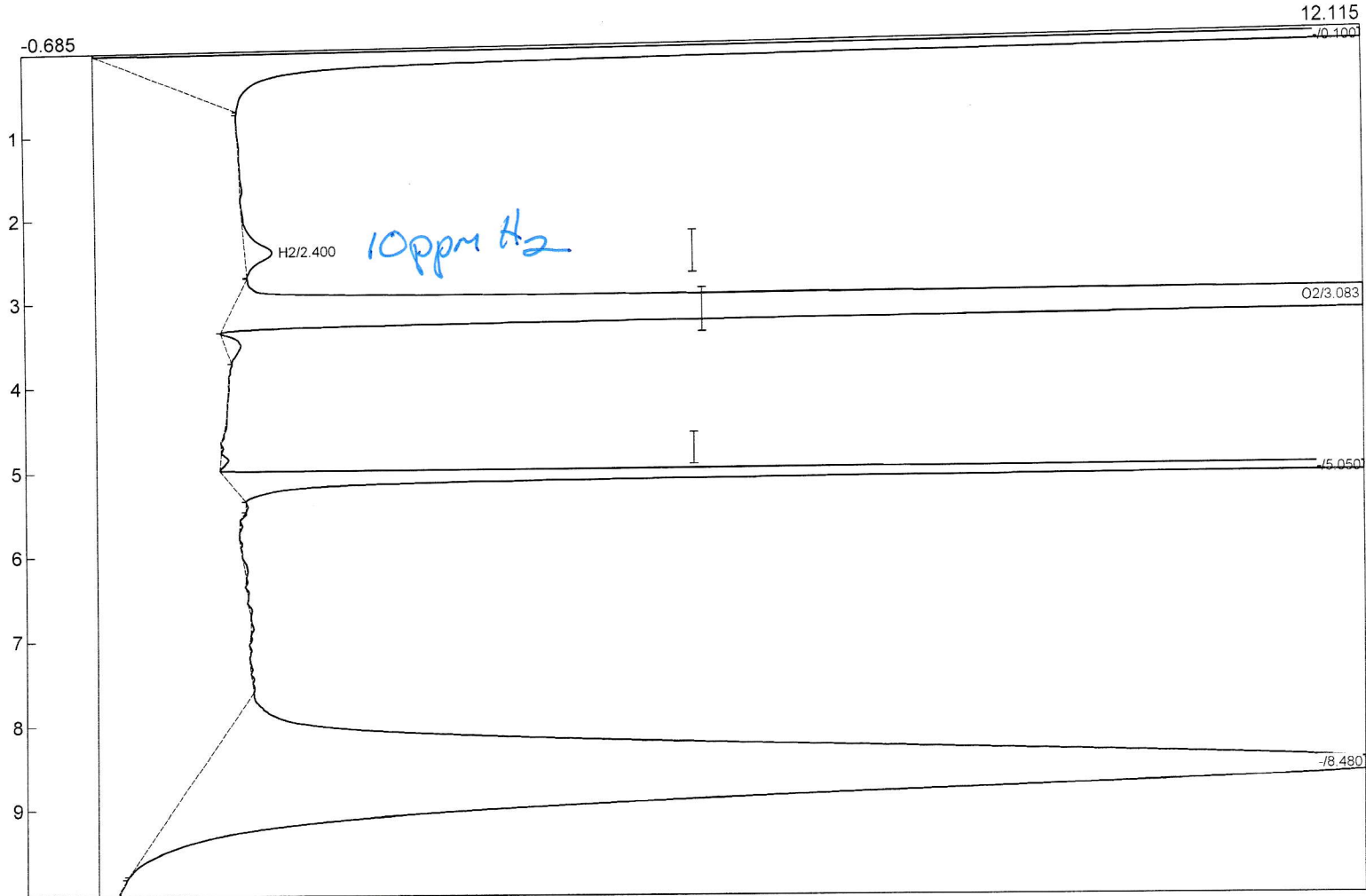
Lab name: SRI final test
 Client ID: N12119
 Analysis date: 08/18/2022 14:33:23
 Method: Valve injection
 Description: TCD Low Gain
 Column: 12' HaysSep D
 Carrier: N2 @ 10 psi
 Integration: Peak sens=95.0 Base sens=60.0 Min area= 2.00 Standard= 1.000 Sample= 1.000 Tangents=off
 Data file: Sterigenics115.CHR ()
 Sample: 0.001% Mix Diluted in Room Air

Temperature program:

Init temp	Hold	Ramp	Final temp
50.00	10.000	0.000	50.00

Events:

Time	Event
0.000	ZERO
0.000	SOUND
0.050	G ON (Valve1Rotate)
1.000	INTEG IMMEDIATE
5.000	G OFF (Valve1Rotate)



Component	Retention	Area	Internal	Units	Alarm
H2	2.400	4.3746	0.0031	%	
O2	3.083	547.7908	58.9860	%	
CH4	0.000	0.0000	0.0000	%	
		552.1654	58.9890		