

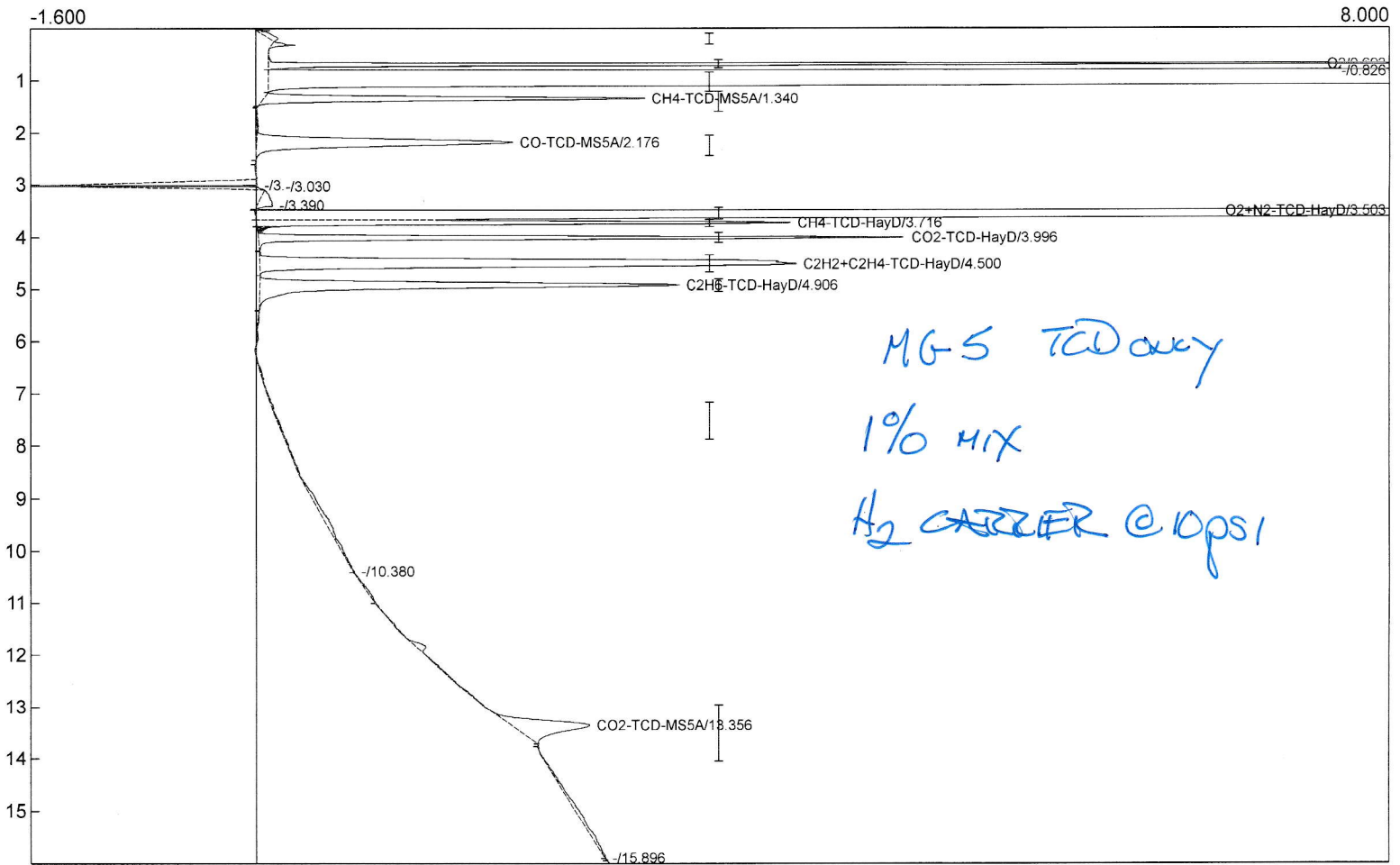
Lab name: SRI Instruments  
 Client: SRI FinalTest  
 Client ID: N12242  
 Analysis date: 04/27/2022 12:13:42  
 Method: MG5 TCD only  
 Description: TCD lowcurrent 100c  
 Column: MG5set 4.5'MS5A  
 Carrier: H2@10psi  
 Integration: Peak sens=80.0 Base sens=60.0 Min area= 1.00 Standard= 1.000 Sample= 1.000 Tangents=off  
 Data file: milehigh11. ()  
 Sample: 1% mix

Temperature program:

Init temp	Hold	Ramp	Final temp
90.00	6.000	30.000	270.00
270.00	4.000	0.000	270.00

Events:

Time	Event
0.000	ZERO
0.020	G ON (Valve1)
0.350	G OFF (Valve1)
0.500	INTEG IMMEDIATE
2.900	INTEG IMMEDIATE
3.000	F ON (Valve2)
3.100	INTEG IMMEDIATE
6.000	F OFF (Valve2)



Component	Retention	Area	External	Units
H2	0.000	0.0000	0.0000	%
O2	0.693	22.4138	1.1320	ppm
N2	0.000	0.0000	0.0000	ppm
CH4-TCD-MS5A	1.340	14.4231	0.9955	ppm
CO-TCD-MS5A	2.176	16.6372	0.9987	ppm
O2+N2-TCD-HayD	3.503	1797.4678	94.1595	ppm
CH4-TCD-HayD	3.716	16.9166	1.0520	ppm
CO2-TCD-HayD	3.996	19.4144	0.9989	ppm
C2H2+C2H4-TCD-HayD	4.500	36.3212	1.9751	ppm
C2H6-TCD-HayD	4.906	22.3256	1.0375	ppm
Water-TCD-HayD	0.000	0.0000	0.0000	ppm
CO2-TCD-MS5A	13.356	8.3225	0.3288	ppm

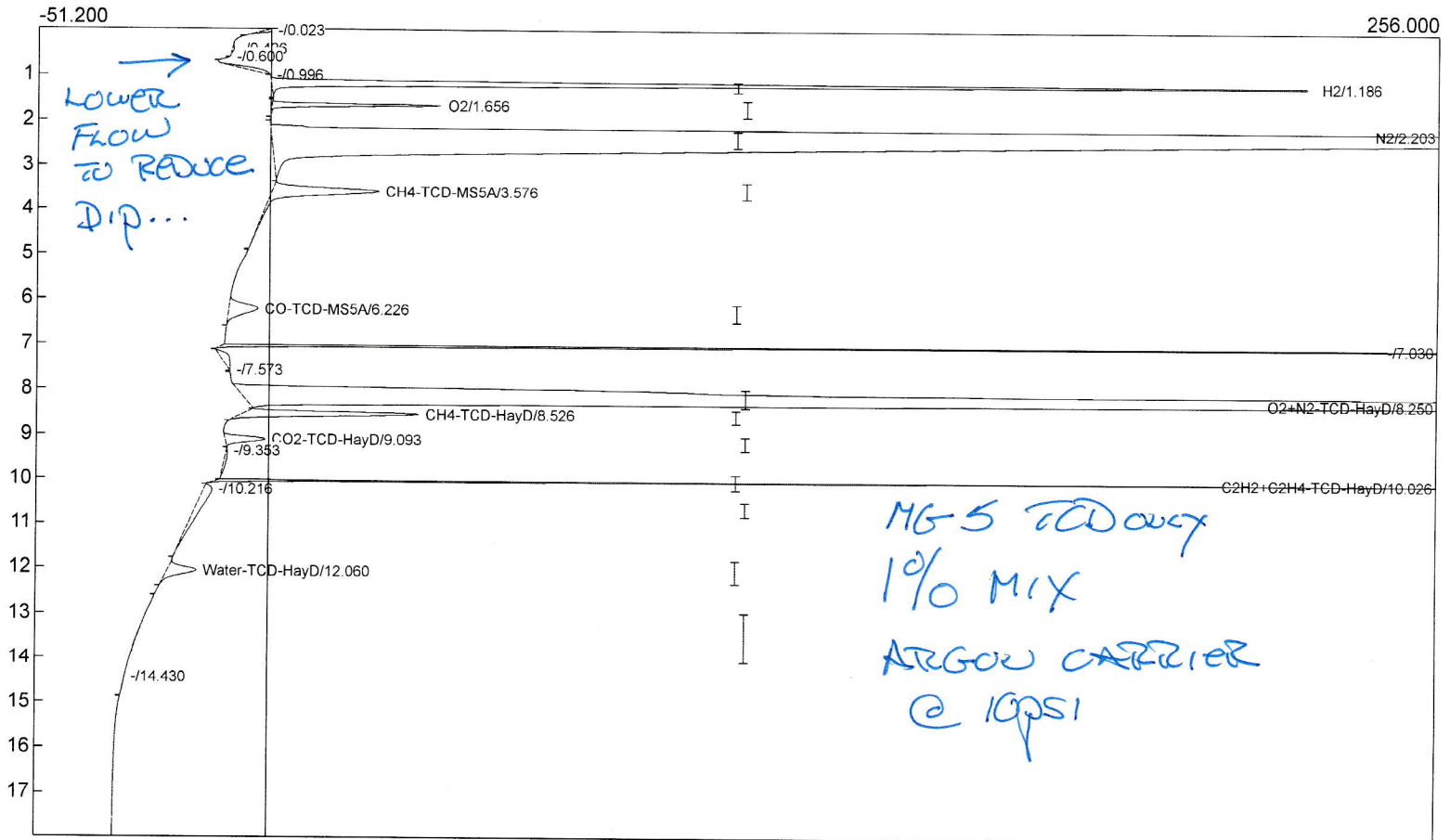
Lab name: SRI Instruments  
 Client: SRI FinalTest  
 Client ID: N12242  
 Analysis date: 04/27/2022 15:35:38  
 Method: MG5 TCD only  
 Description: TCD lowcurrent 100c  
 Column: MG5set 4.5'MS5A  
 Carrier: Argon@10psi  
 Integration: Peak sens=80.0 Base sens=60.0 Min area= 1.00 Standard= 1.000 Sample= 1.000 Tangents=off  
 Data file: milehigh19. ()  
 Sample: 1% mix

Temperature program:

Init temp	Hold	Ramp	Final temp
70.00	2.000	10.000	100.00
100.00	4.000	30.000	270.00
270.00	4.000	0.000	270.00

Events:

Time	Event
0.000	ZERO
0.020	G ON (Valve1)
0.600	INTEG IMMEDIATE
0.700	G OFF (Valve1)
1.000	INTEG IMMEDIATE
1.500	INTEG IMMEDIATE
4.900	INTEG IMMEDIATE
5.100	INTEG IMMEDIATE
5.300	INTEG IMMEDIATE
6.600	INTEG IMMEDIATE
7.000	F ON (Valve2)
10.000	F OFF (Valve2)



Component	Retention	Area	External	Units
-----------	-----------	------	----------	-------

H2	1.186	1054.6798	1.0000	%
O2	1.656	137.5309	1.0000	%
N2	2.203	8335.4453	95.0000	%
CH4-TCD-MS5A	3.576	272.1007	1.0000	%
CO-TCD-MS5A	6.226	98.1046	1.0000	%
O2+N2-TCD-HayD	8.250	10489.3229	95.0000	ppm
CH4-TCD-HayD	8.526	259.4688	1.0000	ppm
CO2-TCD-HayD	9.093	71.2270	1.0000	ppm
C2H2+C2H4-TCD-HayD	10.026	380.9970	2.0000	ppm
C2H6-TCD-HayD	0.000	0.0000	0.0000	ppm
Water-TCD-HayD	12.060	75.4154	95.0000	ppm
CO2-TCD-MS5A	0.000	0.0000	0.0000	ppm

21174.2924 293.0000