

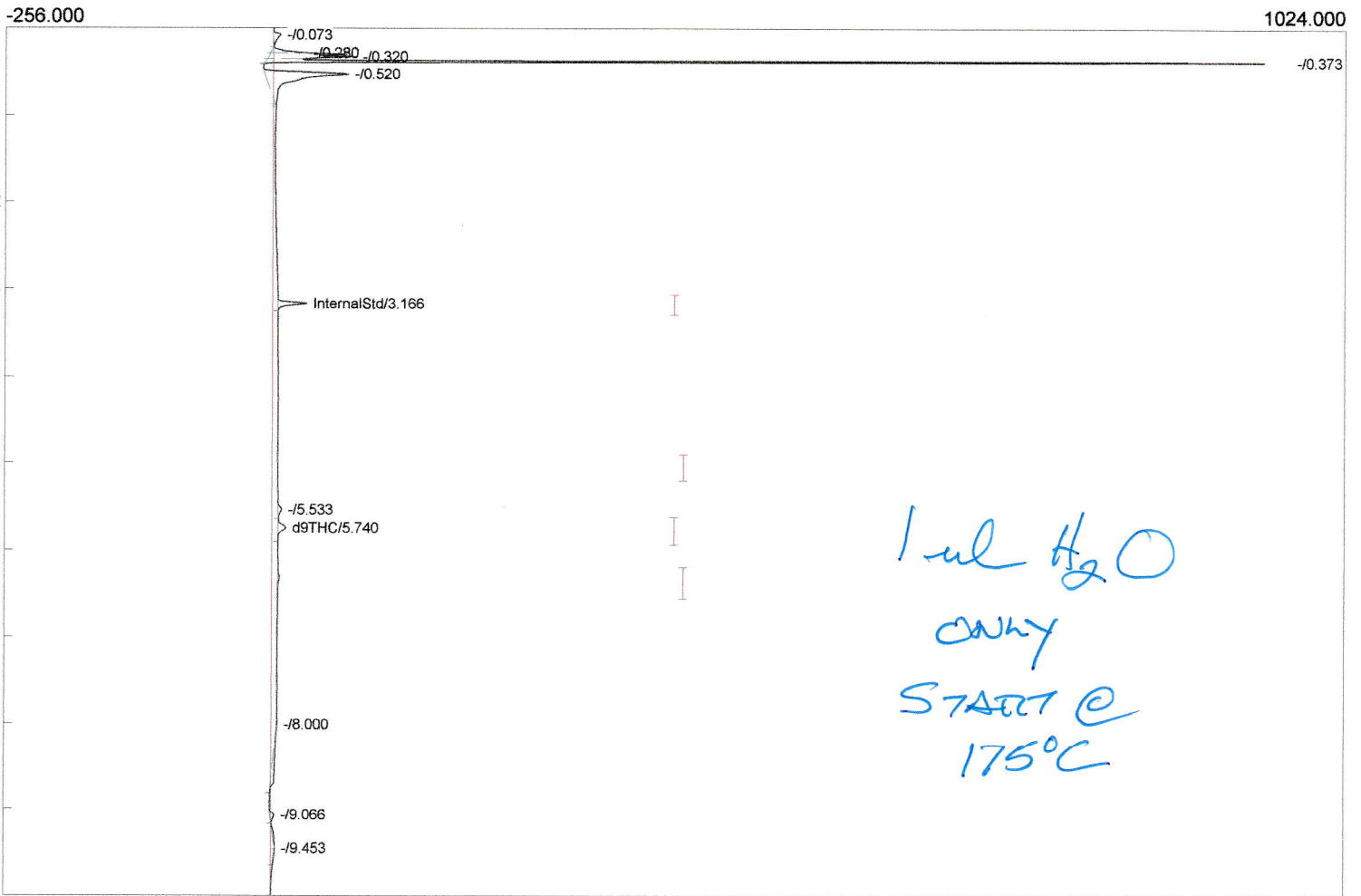
Lab name: SRI Instruments
 Client: SRI R&D
 Client ID: N11067
 Analysis date: 08/17/2020 12:38:57
 Method: Heated Inj 200C
 Description: FID Detector 300C
 Column: 15MXT8 1micron *HK7 502.*
 Carrier: H2 from BIHG
 Integration: Peak sens=95.0 Base sens=60.0 Min area= 10.00 Standard= 4.000 Sample=142.000 Tangents=off
 Data file: 333calibration127.CHR ()
 Sample: 1ul distilled water

Temperature program:

Init temp	Hold	Ramp	Final temp
175.00	0.000	25.000	250.00
250.00	5.000	5.000	250.00
115.00	0.000	30.000	175.00

Events:

Time	Event
0.000	ZERO
0.000	SOUND
0.900	INTEG IMMEDIATE
3.250	INTEG IMMEDIATE



Component	Retention	Area	Internal	Units	NormPotency%
InternalStd	3.166	66.6984	100.0000		0.0000
CBD	0.000	0.0000	0.0000	%	0.0000
d9THC	5.740	32.2636	4.1961	%	0.0000
CBN	0.000	0.0000	0.0000	%	0.0000
		98.9620	104.1961		0.0000

Lab name: SRI Instruments

Client: SRI R&D

Client ID: N11067

Analysis date: 08/17/2020 13:11:39

Method: Heated Inj 200C

Description: FID Detector 300C

Column: 15MXT5 1micron

30MPT502

Carrier: H2 from BIHG

Integration: Peak sens=95.0 Base sens=60.0 Min area= 10.00 Standard= 4.000 Sample=142.000 Tangents=off

Data file: 333calibration129.CHR ()

Sample: 1ul distilled water+3% glycerol

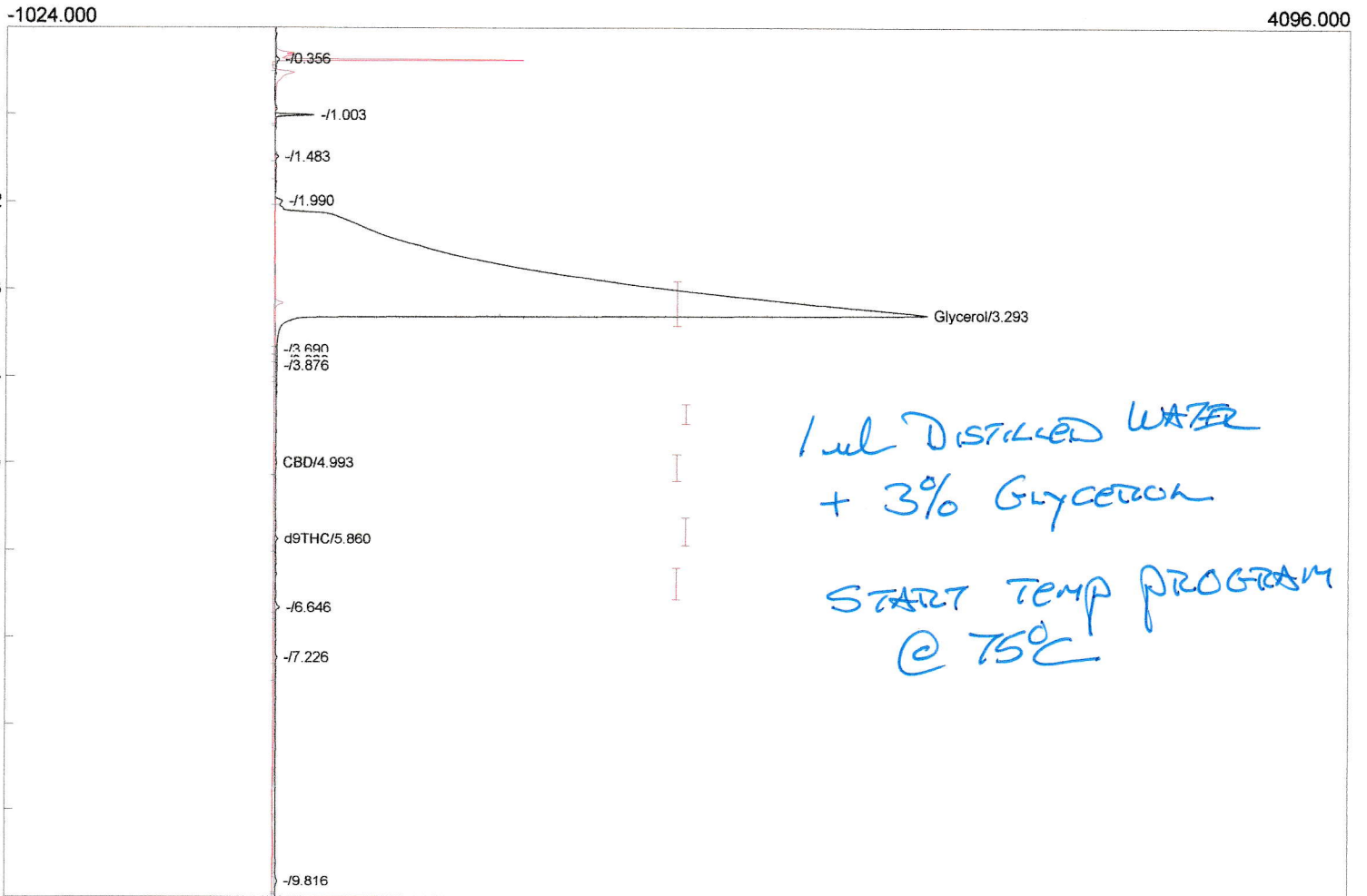
Temperature program:

Init temp	Hold	Ramp	Final temp
75.00	0.000	25.000	250.00
250.00	5.000	5.000	250.00
45.00	3.000	10.000	75.00

START @ 75°C

Events:

Time	Event
0.000	ZERO
0.000	SOUND
0.900	INTEG IMMEDIATE



*1ul DISTILLED WATER
+ 3% GLYCEROL
START TEMP PROGRAM
@ 75°C*

Component	Retention	Area	Internal	Units	NormPotency%
Glycerol	3.293	75018.9256	0.0000	%	0.0000
InternalStd	0.000	0.0000	0.0000		0.0000
CBD	4.993	11.7651	0.0000	%	0.0000
d9THC	5.860	19.0972	0.0000	%	0.0000
CBN	0.000	0.0000	0.0000	%	0.0000
		75049.7879	0.0000		0.0000

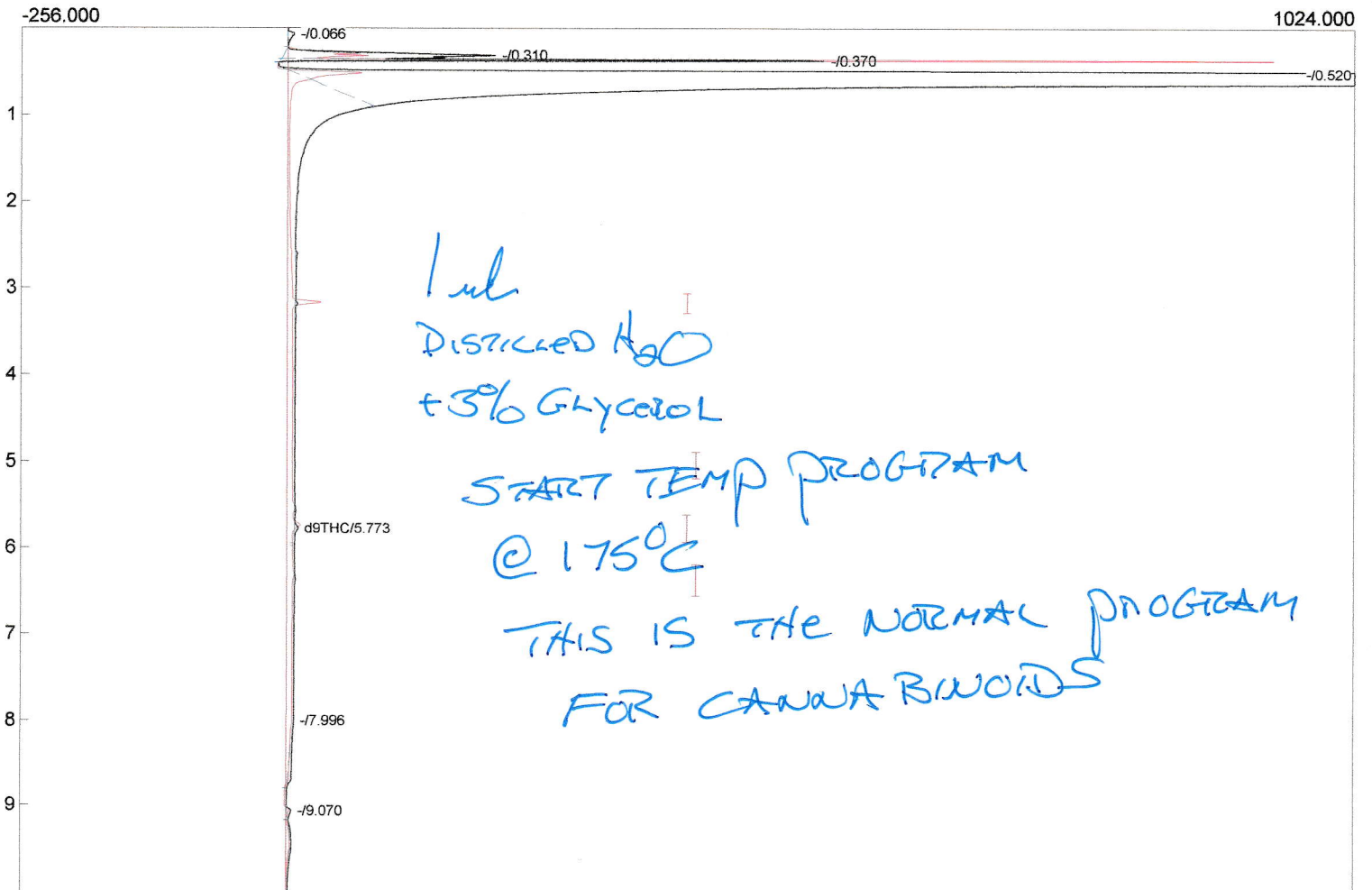
Lab name: SRI Instruments
 Client: SRI R&D
 Client ID: N11067
 Analysis date: 08/17/2020 12:52:31
 Method: Heated Inj 200C
 Description: FID Detector 300C
 Column: 15MXT5 1micron *MS7502*
 Carrier: H2 from BIHG
 Integration: Peak sens=95.0 Base sens=60.0 Min area= 10.00 Standard= 4.000 Sample=142.000 Tangents=off
 Data file: 333calibration128.CHR ()
 Sample: 1ul distilled water+3% glycerol

Temperature program:

Init temp	Hold	Ramp	Final temp
175.00	0.000	25.000	250.00
250.00	5.000	5.000	250.00
115.00	0.000	30.000	175.00

Events:

Time	Event
0.000	ZERO
0.000	SOUND
0.900	INTEG IMMEDIATE
3.250	INTEG IMMEDIATE



Component	Retention	Area	Internal	Units	NormPotency%
InternalStd	0.000	0.0000	0.0000		0.0000
CBD	0.000	0.0000	0.0000 %		0.0000
d9THC	5.773	14.4013	0.0000 %		0.0000
CBN	0.000	0.0000	0.0000 %		0.0000
		14.4013	0.0000		0.0000