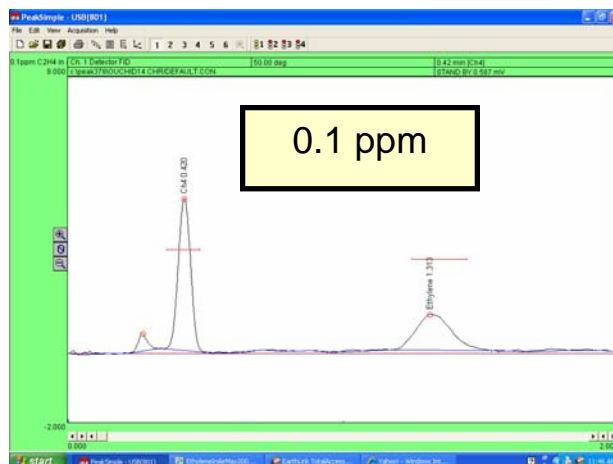
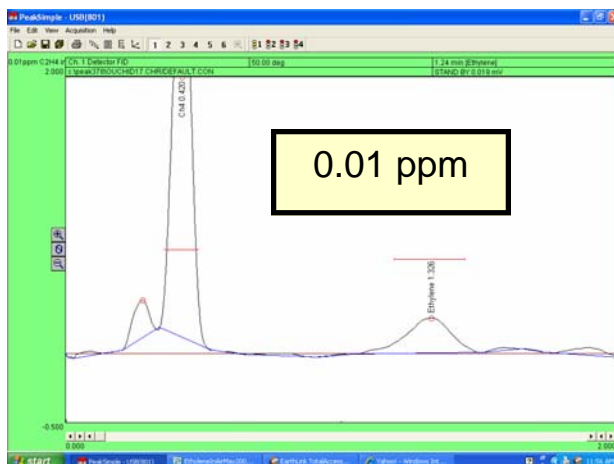
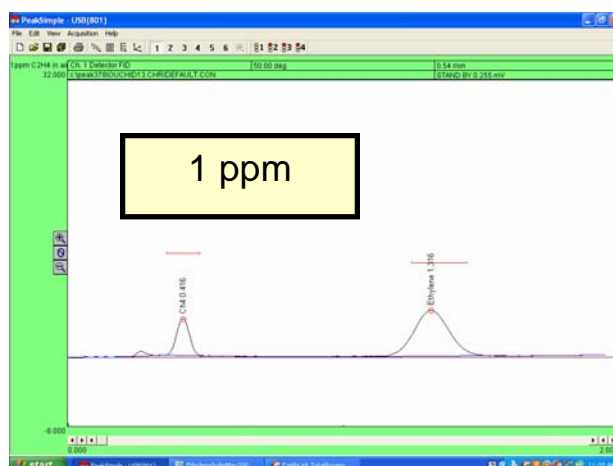
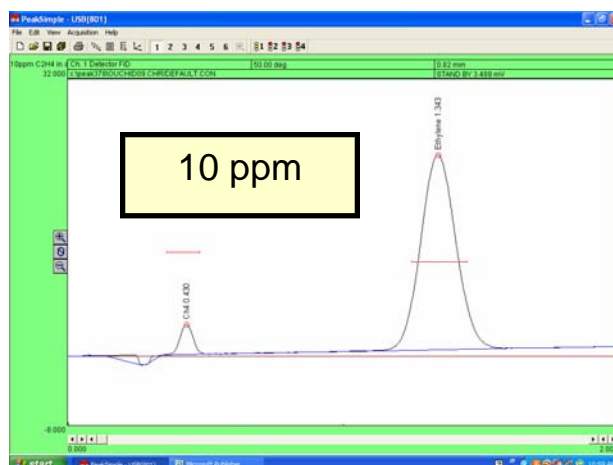


Ethylene in Air using SRI 310C GC May 2009

**Perfect for fruit growers who
want to measure ambient levels
of Ethylene**

The four chromatograms on this page show 1ml Ethylene in room air measured with an SRI Model 310C GC equipped with Flame Ionization Detector (FID) and a 2 meter Porapak Q column. The column temperature was held at 50C.

Room air also contains 1.8ppm Methane which is separated from and elutes prior to the Ethylene peak. You can see that the Methane peak is much larger than the Ethylene peak in the .1 and .01 ppm chromatograms



SRI Instruments 20720 Earl St. Torrance CA 90503 USA
310-214-5092 fax 5097 www.srigc.com