

Lab name: SRI Instruments

Client: SRI Final test

Client ID: N11497

Analysis date: 01/19/2022 10:39:55

Method: 1ul syringe on-column

Description: FID 300C higain

Column: 15MXT500 .15mic+15MXT500 .25 mic

Carrier: H2fromBIHG

Integration: Peak sens=95.0 Base sens=60.0 Min area= 50.00 Standard= 4.000 Sample=100.000 Tangents=off

Data file: Techno865.CHR ()

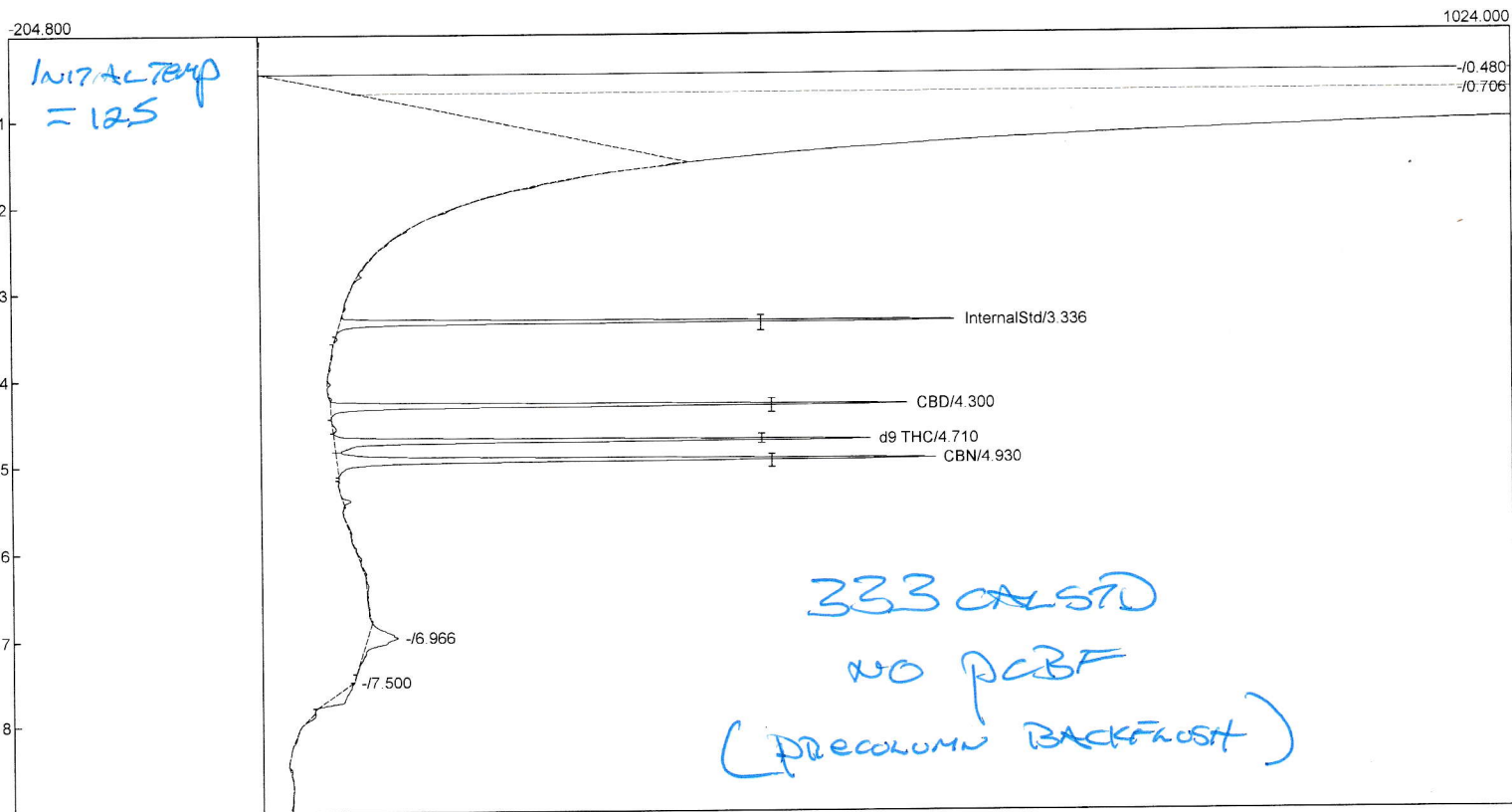
Sample: 333 calib

Temperature program:

Init temp	Hold	Ramp	Final temp
125.00	0.000	25.000	275.00
275.00	1.000	0.000	275.00
105.00	1.000	10.000	125.00

Events:

Time	Event
0.000	ZERO
0.000	SOUND
1.500	INTEG IMMEDIATE
3.000	A OFF (BackFlushPrecol/Midpoint)
6.000	B OFF (OCInjectorVent)
7.500	INTEG IMMEDIATE



Component	Retention	Area	Internal	Units
InternalStd	3.336	1186.6832	100.0000	
CBD	4.300	1204.1336	13.3200	%
d9 THC	4.710	1156.2007	13.3200	%
CBN	4.930	1417.6733	13.3200	%
		4964.6910	139.9600	

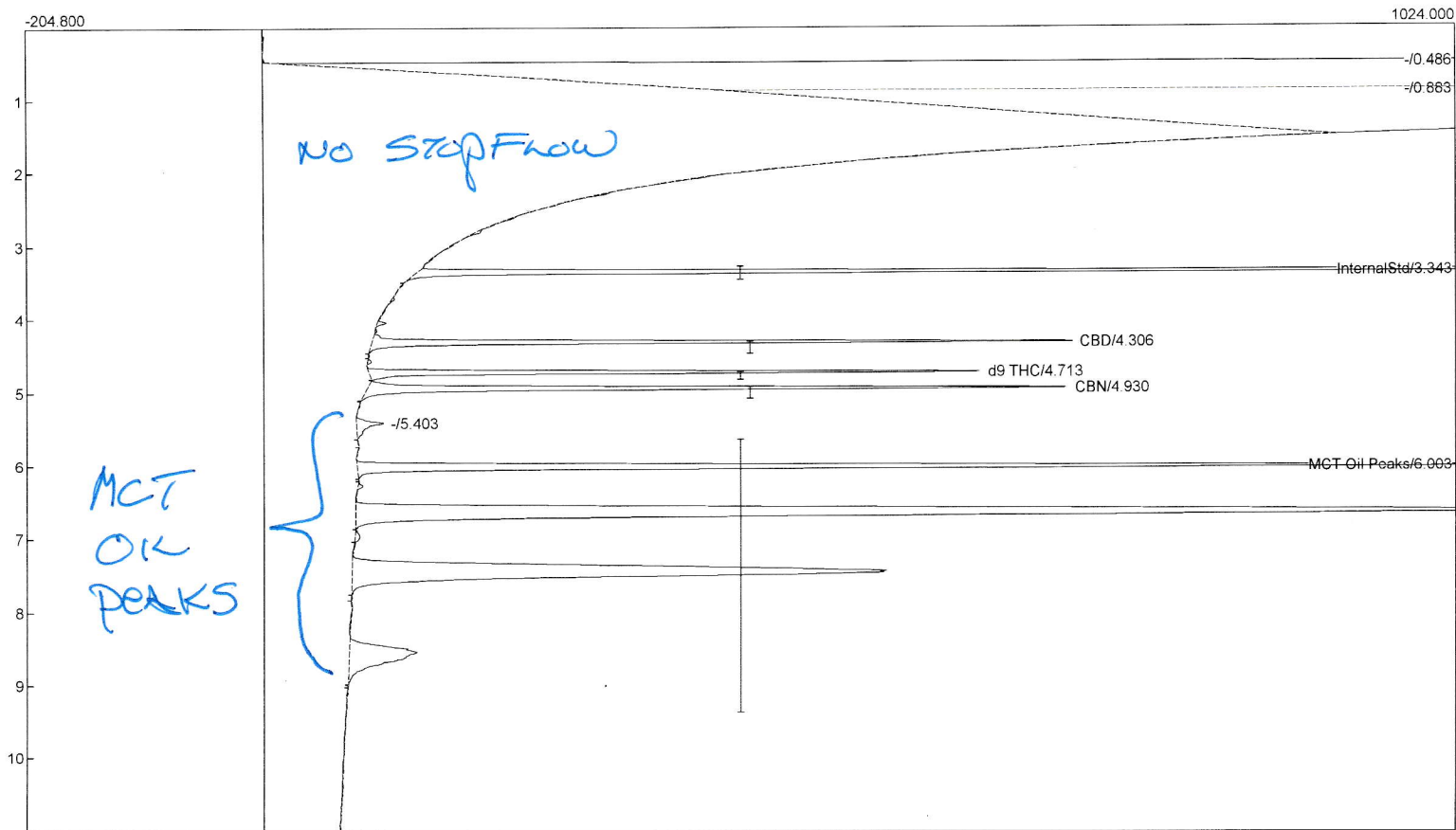
Lab name: SRI Instruments
 Client: SRI Final test
 Client ID: N11497
 Analysis date: 01/19/2022 15:13:03
 Method: 1ul syringe on-column
 Description: FID 300C higain
 Column: 15MXT500 .15mic+15MXT500 .25 mic
 Carrier: H2fromBIHG
 Integration: Peak sens=95.0 Base sens=60.0 Min area= 50.00 Standard= 4.000 Sample=100.000 Tangents=off
 Data file: Techno870.CHR ()
 Sample: 333 calib+ 112mg MCT oil extract

Temperature program:

Init temp	Hold	Ramp	Final temp
125.00	0.000	25.000	275.00
275.00	5.000	0.000	275.00
105.00	1.000	10.000	125.00

Events:

Time	Event
0.000	ZERO
0.000	SOUND
1.500	INTEG IMMEDIATE
2.000	A OFF (BackFlushPrecol/Midpoint)
6.000	B OFF (OCInjectorVent)



Component	Retention	Area	Internal	Units
InternalStd	3.343	3289.1168	100.0000	
CBD	4.306	1613.5566	6.4398	%
d9 THC	4.713	1351.4754	5.6174	%
CBN	4.930	1728.6376	5.8599	%
MCT Oil Peaks	6.003	16034.1838	0.0000	%
		24016.9702	117.9170	

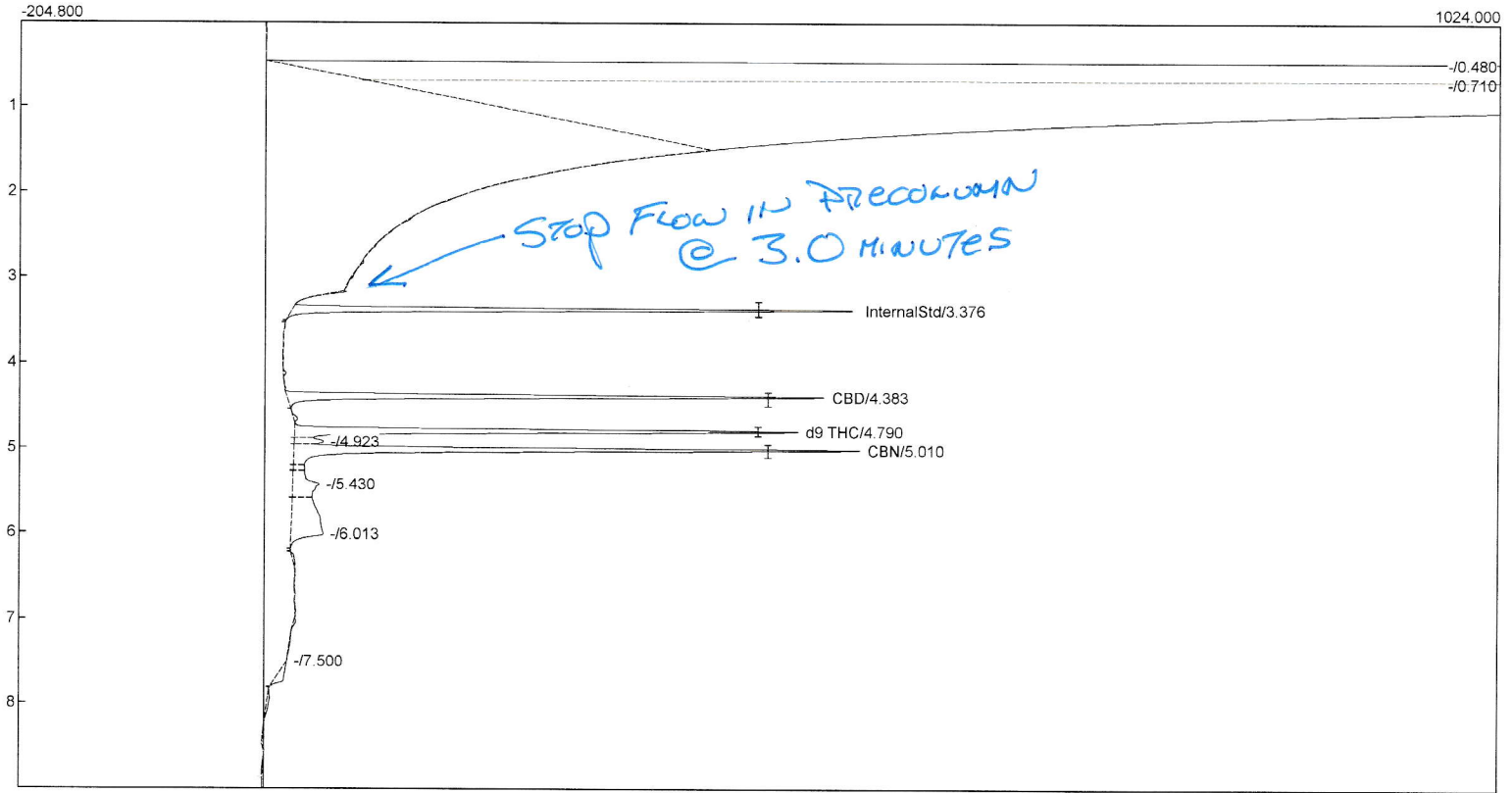
Lab name: SRI Instruments
 Client: SRI Final test
 Client ID: N11497
 Analysis date: 01/19/2022 11:52:35
 Method: 1ul syringe on-column
 Description: FID 300C higain
 Column: 15MXT500 .15mic+15MXT500 .25 mic
 Carrier: H2fromBIHG
 Integration: Peak sens=95.0 Base sens=60.0 Min area= 50.00 Standard= 4.000 Sample=100.000 Tangents=off
 Data file: Techno866.CHR ()
 Sample: 333 calib

Temperature program:

Init temp	Hold	Ramp	Final temp
125.00	0.000	25.000	275.00
275.00	1.000	0.000	275.00
105.00	1.000	10.000	125.00

Events:

Time	Event
0.000	ZERO
0.000	SOUND
1.500	INTEG IMMEDIATE
3.000	A ON (BackFlshPrecol/Midpoint)
6.000	B ON (OCInjectorVent)
7.500	INTEG IMMEDIATE



Component	Retention	Area	Internal	Units
InternalStd	3.376	1197.0955	100.0000	
CBD	4.383	1247.4133	13.6787	%
d9 THC	4.790	1192.5401	13.6191	%
CBN	5.010	1491.5700	13.8924	%
		5128.6189	141.1903	

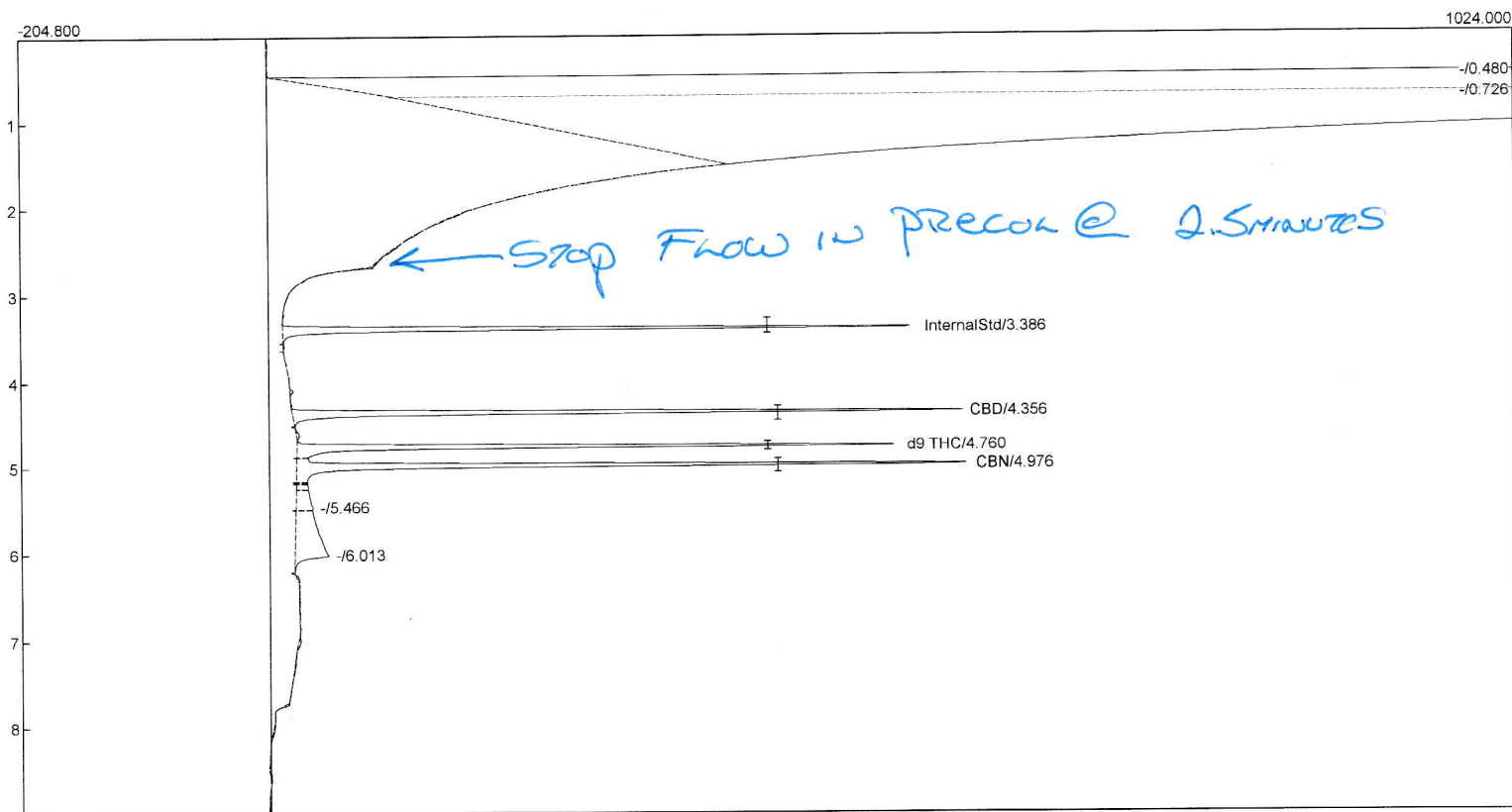
Lab name: SRI Instruments
 Client: SRI Final test
 Client ID: N11497
 Analysis date: 01/19/2022 13:51:46
 Method: 1ul syringe on-column
 Description: FID 300C higain
 Column: 15MXT500 .15mic+15MXT500 .25 mic
 Carrier: H2fromBIHG
 Integration: Peak sens=95.0 Base sens=60.0 Min area= 50.00 Standard= 4.000 Sample=100.000 Tangents=off
 Data file: Techno867.CHR ()
 Sample: 333 calib

Temperature program:

Init temp	Hold	Ramp	Final temp
125.00	0.000	25.000	275.00
275.00	1.000	0.000	275.00
105.00	1.000	10.000	125.00

Events:

Time	Event
0.000	ZERO
0.000	SOUND
1.500	INTEG IMMEDIATE
2.500	A ON (BackFlshPrecol/Midpoint)
6.000	B ON (OCInjectorVent)
7.500	INTEG IMMEDIATE



Component	Retention	Area	Internal	Units
InternalStd	3.386	1261.1380	100.0000	
CBD	4.356	1416.7308	14.7465	%
d9 THC	4.760	1319.8062	14.3072	%
CBN	4.976	1567.3998	13.8573	%
		5565.0748	142.9110	

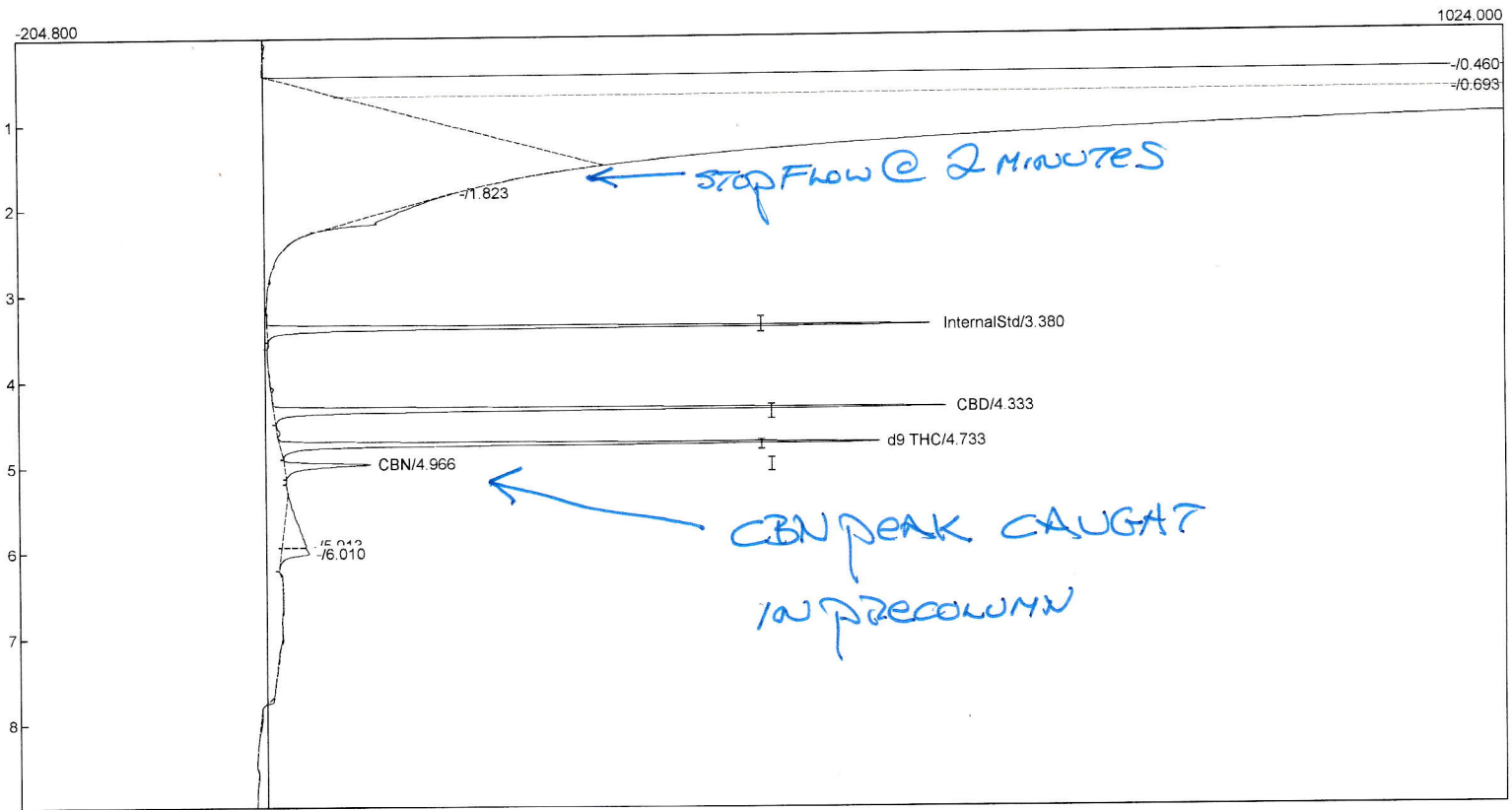
Lab name: SRI Instruments
 Client: SRI Final test
 Client ID: N11497
 Analysis date: 01/19/2022 14:03:39
 Method: 1ul syringe on-column
 Description: FID 300C higain
 Column: 15MXT500 .15mic+15MXT500 .25 mic
 Carrier: H2fromBIHG
 Integration: Peak sens=95.0 Base sens=60.0 Min area= 50.00 Standard= 4.000 Sample=100.000 Tangents=off
 Data file: Techno868.CHR ()
 Sample: 333 calib

Temperature program:

Init temp	Hold	Ramp	Final temp
125.00	0.000	25.000	275.00
275.00	1.000	0.000	275.00
105.00	1.000	10.000	125.00

Events:

Time	Event
0.000	ZERO
0.000	SOUND
1.500	INTEG IMMEDIATE
2.000	A ON (BackFisuhPrecol/Midpoint)
6.000	B ON (OCinjectorVent)
7.500	INTEG IMMEDIATE



Component	Retention	Area	Internal	Units
InternalStd	3.380	1289.6152	100.0000	
CBD	4.333	1407.7536	14.3295	%
d9 THC	4.733	1256.4736	13.3198	%
CBN	4.966	262.1050	2.2661	%
		4215.9474	129.9154	