

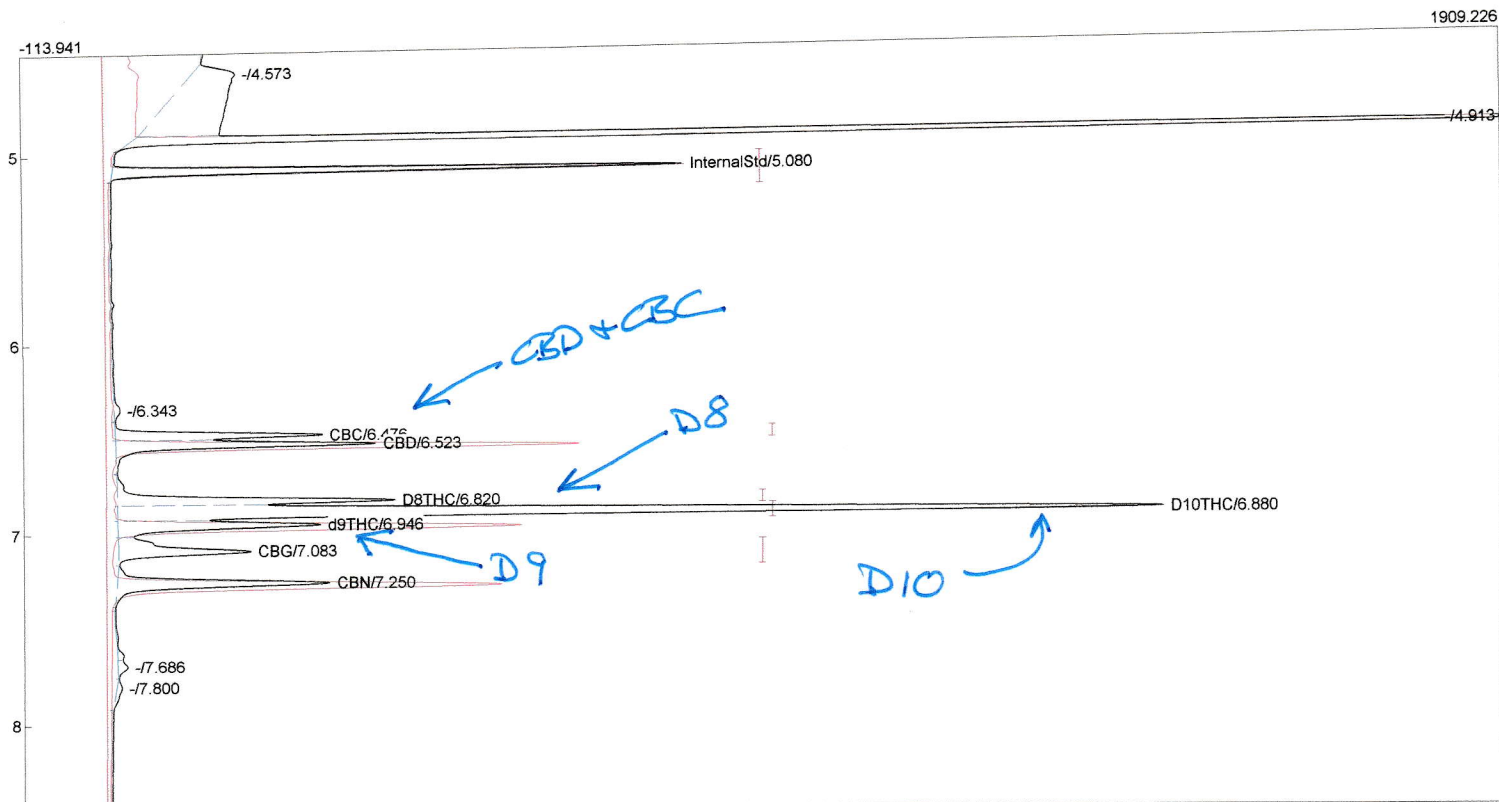
Lab name: SRI Instruments  
 Client: SRI Final test/CBD GC  
 Client ID: N11883  
 Analysis date: 01/29/2021 13:30:42  
 Method: 1ul syringe on-column  
 Description: FID 300C  
 Column: 30MXT502 1 micron+15MXT500  
 Carrier: H210psi from cylinder  
 Integration: Peak sens=95.0 Base sens=60.0 Min area= 20.00 Standard= 4.000 Sample=100.000 Tangents=off  
 Data file: 333calMXT846.CHR ()  
 Sample: D10+6cannabinoids

Temperature program:

Init temp	Hold	Ramp	Final temp
150.00	0.000	25.000	300.00
300.00	3.000	0.000	300.00
125.00	2.000	25.000	150.00

Events:

Time	Event
0.000	ZERO
0.000	SOUND
2.000	INTEG IMMEDIATE
4.500	A ON (BackFlisuhPrecol)



Component	Retention	Area	Units
InternalStd	5.080	1212.7987	
CBC	6.476	549.7145	%
CBD	6.523	796.8036	%
D8THC	6.820	816.2948	%
D10THC	6.880	3424.0778	%
d9THC	6.946	700.0724	%
CBG	7.083	546.4934	%
CBN	7.250	747.7192	%
MCT Oil Peaks	0.000	0.0000	%
OtherOliveOilPeaks	0.000	0.0000	%
Triolein	0.000	0.0000	%
TotalOtherCannabinoids	0.000	0.0000	%

8793.9744