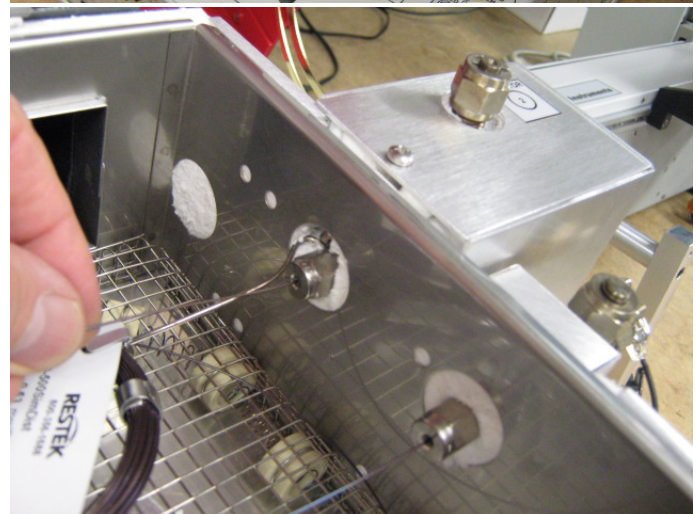
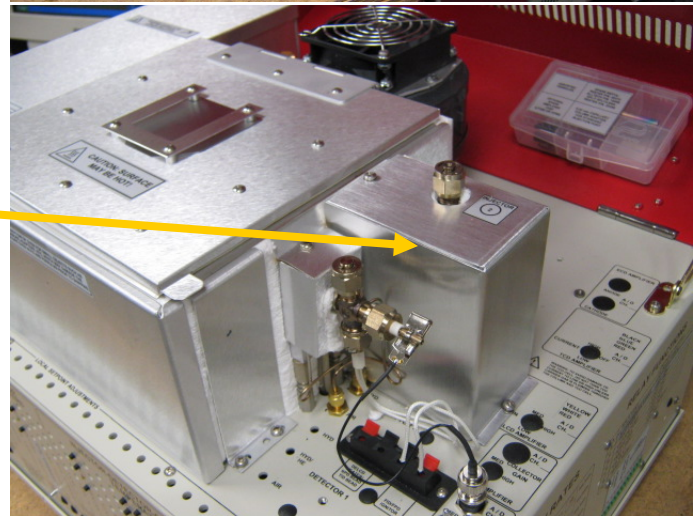
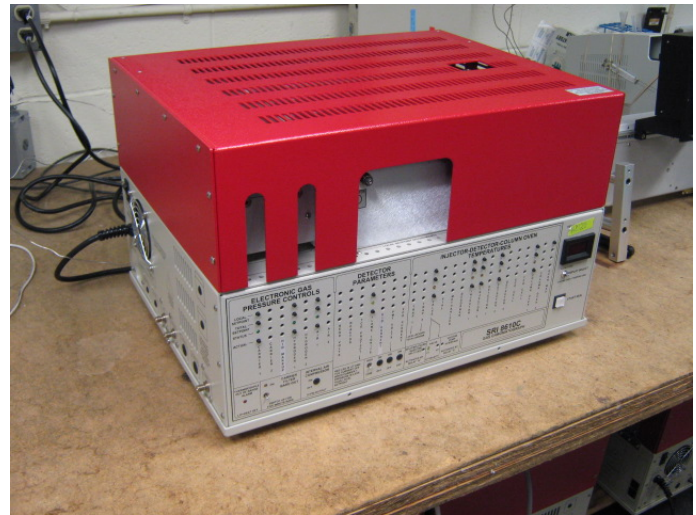


Mounting the Cobra Autosampler on the SRI 8610C Feb 2012

Most SRI 8610C GCs may be factory modified to mount the Cobra Autosampler.

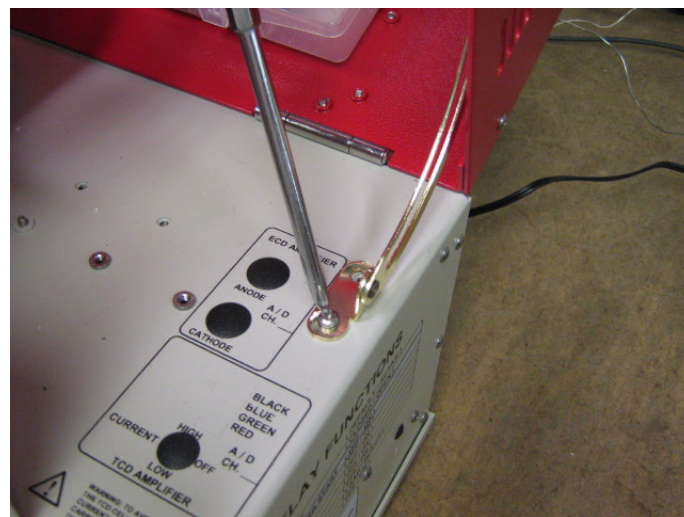
The GC must have an available location to mount the Vertical Injector. Ideally this Injector can be mounted in the third heated block location along the right side of the GC oven. It can be mounted in other locations depending on the exact configuration of the GC.

The column is connected to the Vertical Injector as shown.

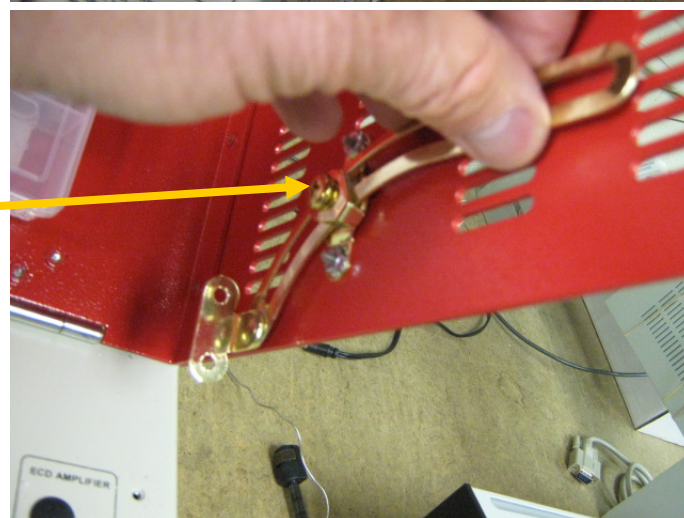


Mounting the Cobra Autosampler on the SRI 8610C Feb 2012

Remove the two Phillips head screws which hold the lid support to the GC chassis.



Slide the lid support up so it is out of the way.



Remove the 6 Phillips head screws which hold the two hinges on the back of the GC.

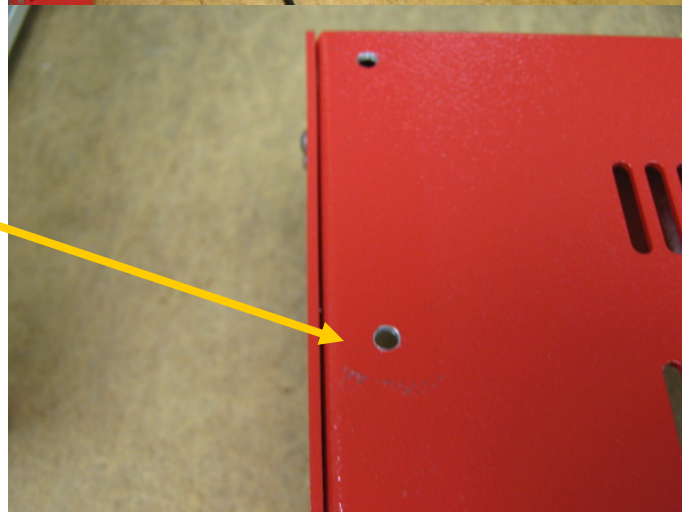


Mounting the Cobra Autosampler on the SRI 8610C Feb 2012

Locate the 4 socket head screws and washers. You will also need a 3/32" hex wrench. A long handled hex wrench makes it easier.

Lay the Cobra down on the bench. If the two gas springs (the black cylinders) are already attached to the Cobra, just lay the out as shown.

The holes in the legs of the Cobra should match up to the holes drilled in the GC red lid.



Mounting the Cobra Autosampler on the SRI 8610C Feb 2012

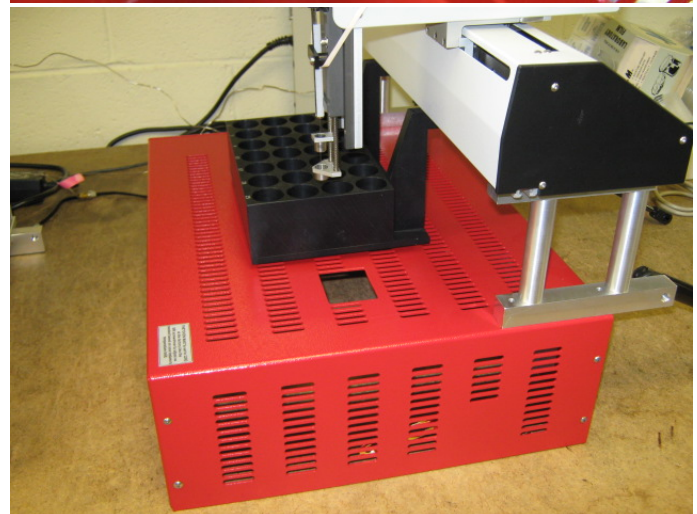
Line up the lid with the Cobra feet.



Tighten the 4 hex head screws and washers. Be sure to use the washers to spread the load.



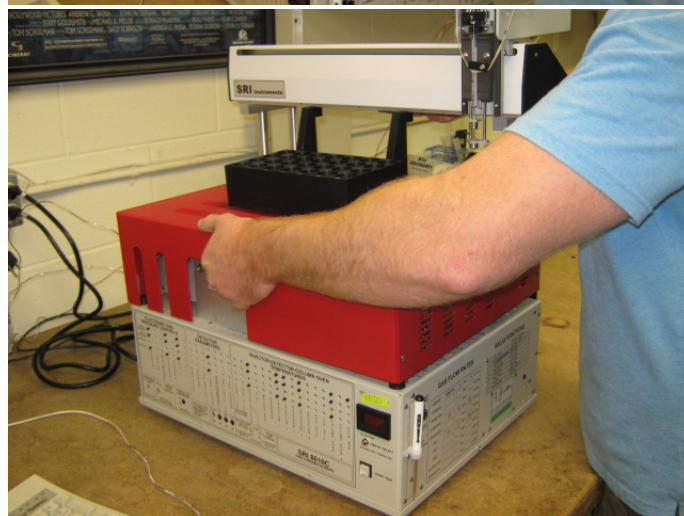
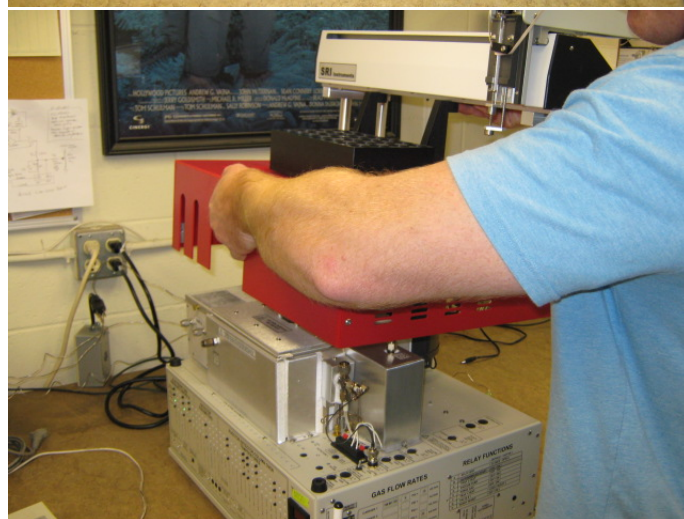
The Cobra is now secured to the red lid.



Mounting the Cobra Autosampler on the SRI 8610C Feb 2012

If the gas springs are already attached to the Cobra feet, stretch them back and out of the way.

Lift the red lid and Cobra back on top of the GC.



Mounting the Cobra Autosampler on the SRI 8610C Feb 2012

The gas spring has a push on fitting at each end which snaps onto a matching ball at the bottom rear of the GC.

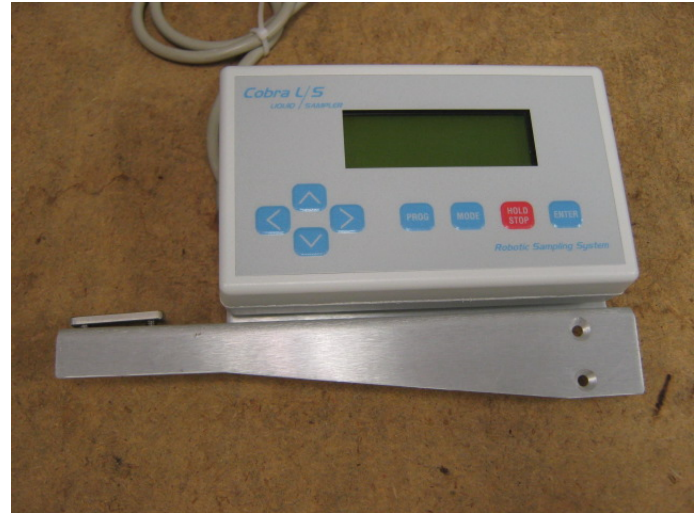
Attach both gas springs.

To remove the fitting from the ball, insert the blade of a small screwdriver between the metal clip and the fitting and pry outwards while pulling the fitting away from the ball. If you pry the clip out enough, the fitting practically falls off the ball with very little force required.

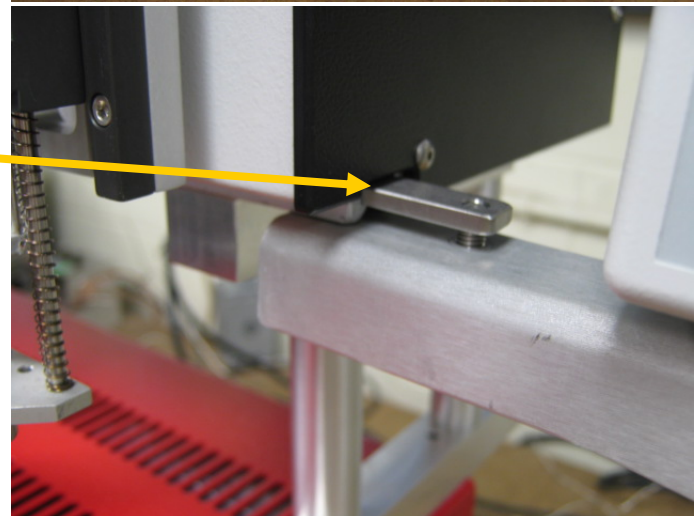


Mounting the Cobra Autosampler on the SRI 8610C Feb 2012

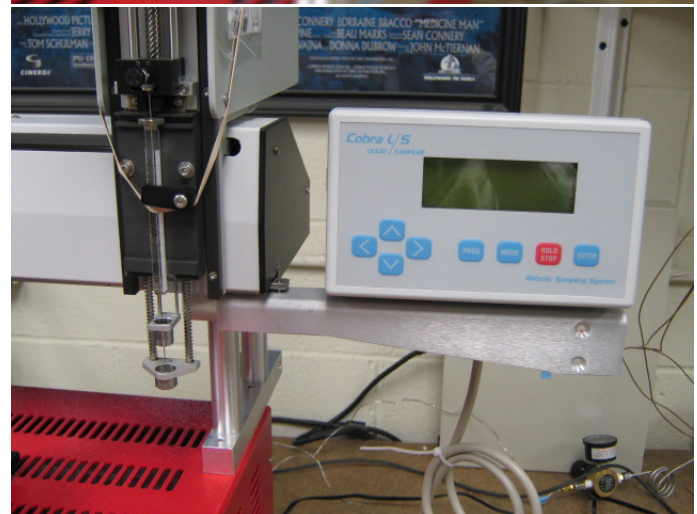
Locate the Cobra keypad and mounting bracket.



Slide the mounting bracket into the rail on the right side of the Cobra.

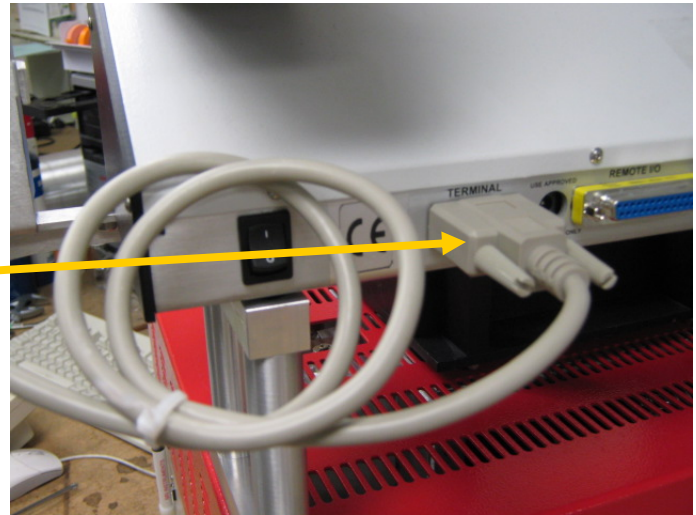


Tighten the two hex head screws with the 3/32" hex wrench to secure the keypad to the Cobra.



Mounting the Cobra Autosampler on the SRI 8610C Feb 2012

Connect the keypad to the back of the Cobra.



Connect the 24volt power to the jack on the back of the Cobra.



The 24volt power supply is a 50watt (24volts-2.1amps) universal power supply that can work on any line voltage. You may have to change the power plug or cord for your specific country.



Mounting the Cobra Autosampler on the SRI 8610C Feb 2012

Connect the remote control cable to the Back of the Cobra.

Connect the green plug on the other end of the remote control cable to the jack on the right side of the 8610C GC.

Follow the instructions in the Cobra operating manual and in other SRI publications (www.srigc.com/documents.htm) to finish the installation.

