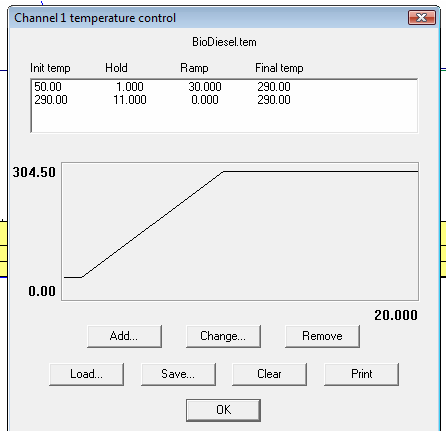
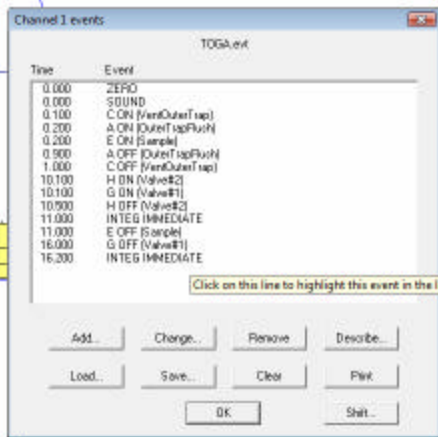


Quick Field Test for the SRI Model 8610C TOGA configuration

To test the TOGA GC configuration:
1) Set the column temperature as shown below.



2) Enter the events as shown. You may have to modify the valve rotation times slightly depending on the elution times of the particular column set in the GC.



3) Plumb the tubing as shown in the photo.

1/16" Teflon exit Tubing to sample pump inlet

