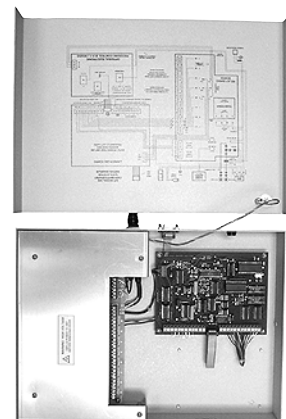


Quick Start

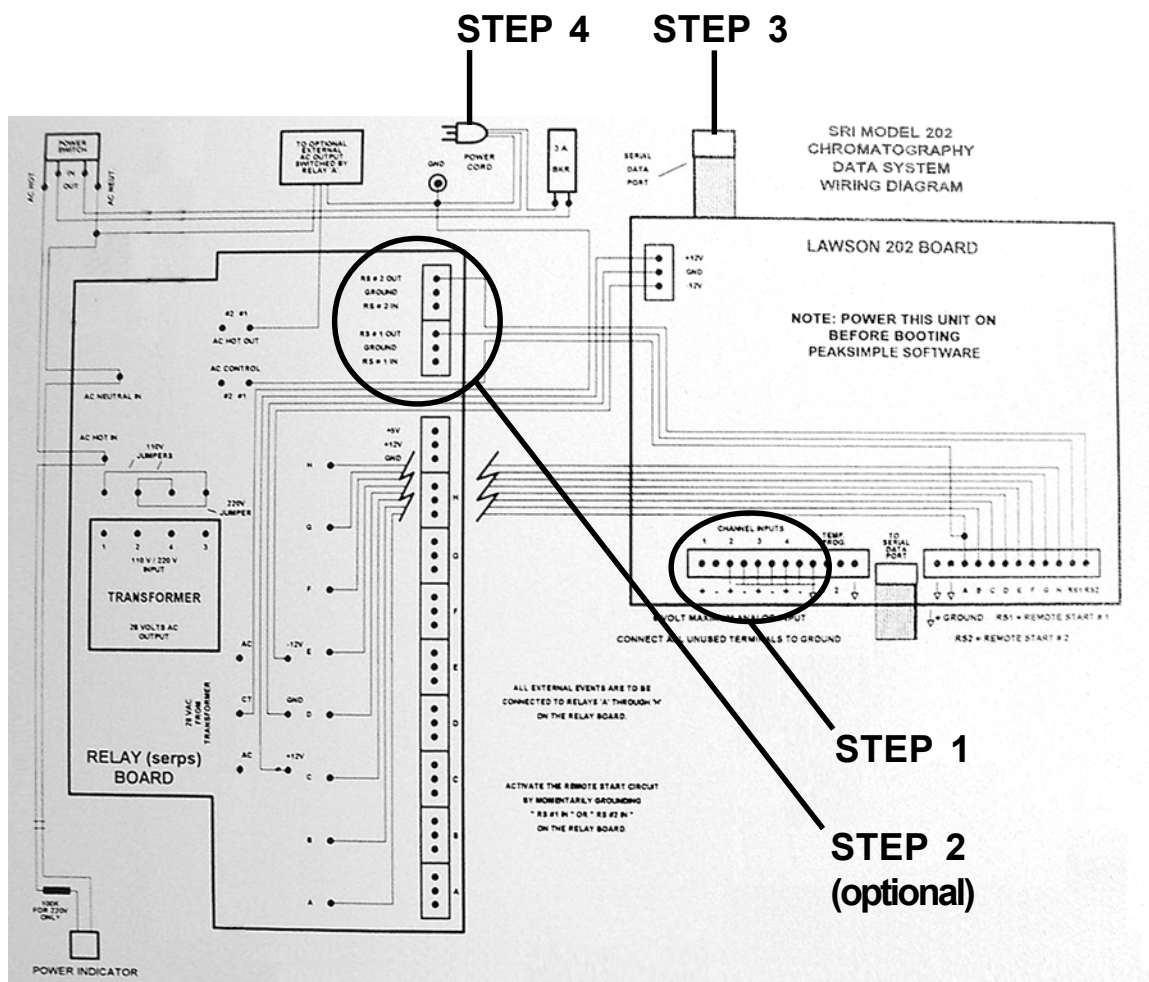
Model 202 Four Channel PeakSimple Data System

The **Model 202** may be used with any brand or model of GC or HPLC offering an analog detector output signal ranging from -5V to +5V. It includes two independent, programmable controls (-5V to +5V analog output) for temperature & pressure or HPLC gradient formation. The Model 202 has four channels, which can be split any way between the two time bases (TIMEBASE 1 and 2). Two remote start inputs compatible with 2-wire switch closures (typically output by GCs and HPLCs as a remote start signal) are also included for your optional use.



Open the Model 202

Verify that the Model 202 is powered OFF and unplugged. Remove the thumbscrews on both sides of the Model 202 box and slide the top cover up and off. It is connected to the bottom of the box by the ground wire, so just set it next to the bottom half of the box. There is a wiring diagram of the Model 202 circuit boards and all wiring connections on the inside of the top cover. Use this wiring diagram (shown below) to complete steps 1-4 as described on the following pages, then proceed to steps 5 & 6.



STEP 5: Install PeakSimple

STEP 6: Starting an Analysis

Quick Start

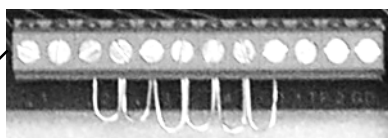
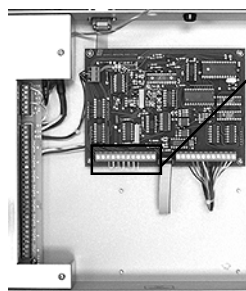
Model 202 Four Channel PeakSimple Data System

STEP 1: Connect the Analog Signal Cable(s)

1-1. Route the analog signal cables from your instrument through the open hole in the back of the Model 202.

1-2. Strip 1/4" of insulation from the "signal+" and "signal-" wires of your instrument's signal cables.

Route the signal cables through this hole



The Model 202 is shipped with jumpers in the Channel screw terminals

1-3. Remove the jumpers shown in the close-up picture to the left. Insert the "signal+" wire into the Lawson 202 board screw terminal marked "CH1 sig +" and secure the connection with a small flat-blade screwdriver.

1-4. Insert the "signal-" wire into the Lawson 202 board screw terminal marked "CH1 sig -" and secure the connection.

1-5. Repeat the connection of signal cables for channels 2, 3, and 4. Any unused channels MUST have both inputs jumpered to ground.

STEP 2: (OPTIONAL) Connect the Remote Start Cable

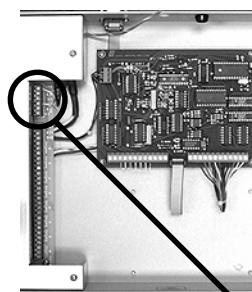
The Model 202 remote start capability allows you to start the data system by means of a switch closure. Two separate remote start circuits permit the user to individually start TIMEBASE 1 and 2 of the data system. In some applications, the chromatograph being used with the Model 202 may offer a remote start signal output or switch closure output that permits starting an integrator or other device when the START button is pressed on the chromatograph's on-board control panel. Typically, this signal can be used to start the Model 202.

2-1. Route the remote start cable from your instrument through the open hole in the back of the Model 202.

2-2. Strip 1/4" of insulation from the "+" and "-" wires of your remote start cable.

2-3. Insert the "+" wire into the RELAY board screw terminal marked "#1 IN" and secure the connection.

2-4. Insert the "-" wire into the RELAY board screw terminal marked "#1 G" and secure the connection.



Quick Start

Model 202 Four Channel PeakSimple Data System

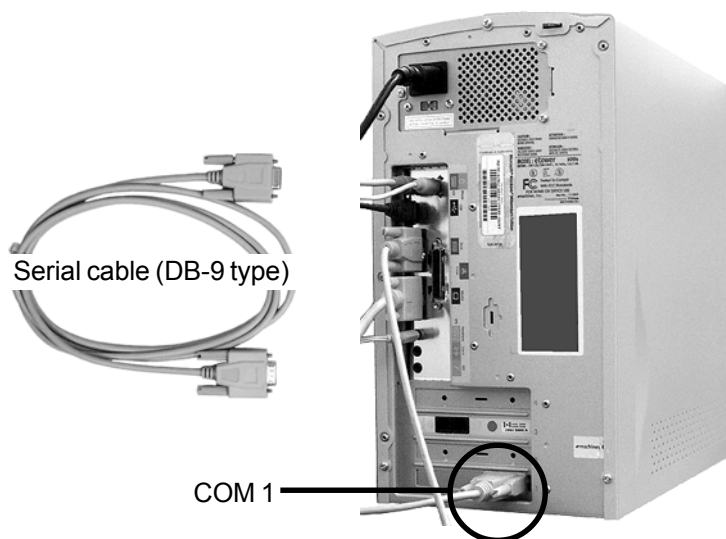
Slide the cover back onto the Model 202 and secure it with the thumbscrews.

STEP 3: Connect the Serial Cable to Your Computer

The Model 202 is equipped with a RS-232 serial port. A DB-9 type serial cable (provided) connects the Model 202 to your Windows™ computer through the PC's COM port. This simple interface permits the Model 202 to be operated from a desktop or laptop computer.

3-1. Secure one end of the serial cable to an available COM port on your PC.

3-2. Secure the other end to the RS-232 serial port on the back of the Model 202.



STEP 4: Connect Power to the Model 202

The Model 202 is provided with a power cord which plugs into a standard 110 (or 220) volt outlet. Plug the Model 202 into the wall outlet. Turn ON the power switch and verify that the POWER LED on the front of the Model 202 is lit.



The power LED is lit when the Model 202 is connected to a power source.

STEP 5: Install PeakSimple Chromatography Software

5-1. Locate your copy of PeakSimple, which is shipped inside the front cover of your SRI manual. Insert the CD or floppy disk(s) into your computer's appropriate drive.

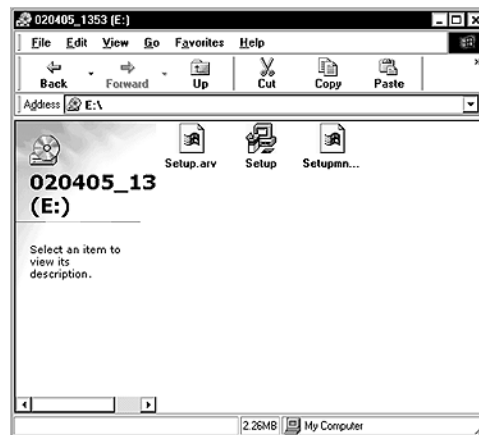


Quick Start

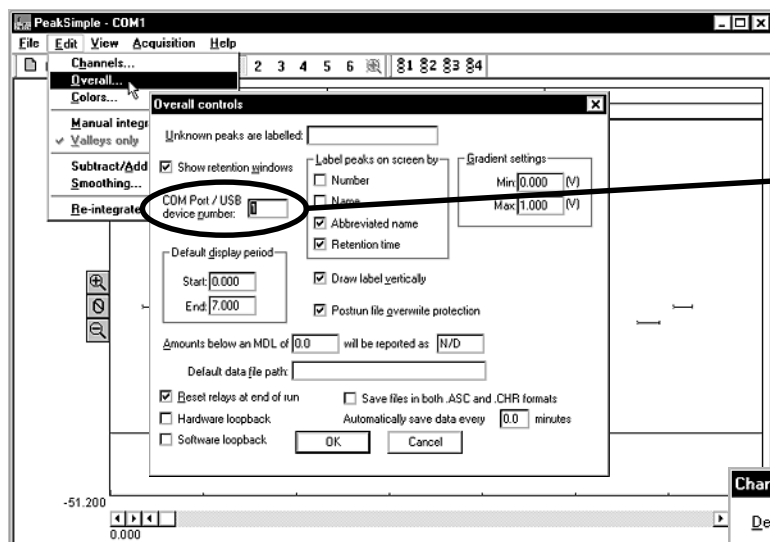
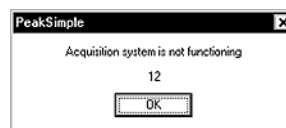
Model 202 Four Channel PeakSimple Data System

STEP 5 Continued

5-2. Open the appropriate drive through My Computer, then double click on “Setup.exe” and follow the instructions.

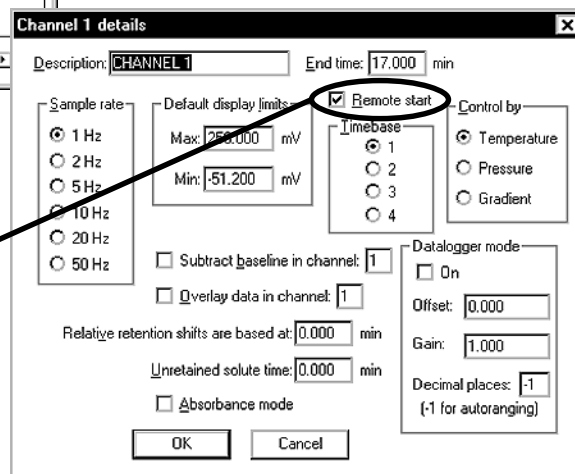


5-3. Double-click on the PeakSimple icon to launch the program. Verify that communication has been established between your computer and the Model 202. An error message will appear if communication is not established.



5-4. PeakSimple defaults to COM 1. If you did not connect the Model 202 to COM 1, you will get the error message. Open the Edit menu and choose Overall. In the dialog box that appears, enter the number of the COM port to which you have connected the Model 202. If you do not know the number of the COM port to which you connected the 202, use the process of elimination: try different numbers until you find one that works.

5-5. For the remote start option: Open the Edit menu and choose Channels. Click on the Details button for channel 1. Verify that Remote start is enabled (the box should be checked). Repeat this step for channel 2.

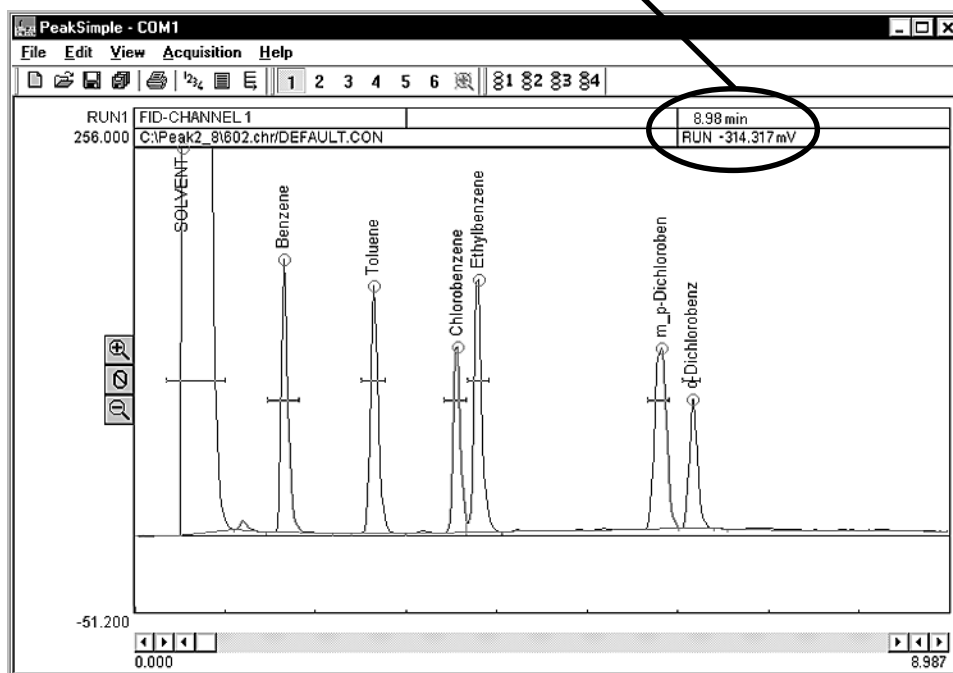


Quick Start

Model 202
Four Channel PeakSimple Data System

STEP 6: Starting an Analysis

6-1. The upper right corner of the PeakSimple chromatogram window contains real-time information pertinent to your analysis in progress. The status of the run (STAND BY, RUN) is displayed in capital letters next to the millivolt (mV) reading, underneath the amount of time into the run.



6-2. Hit your computer keyboard spacebar to begin the run, and the data is plotted onscreen in the chromatogram window.



Press the spacebar to begin the run

Press the End key to stop the run

6-3. Hit the End key on your computer keyboard to stop the run.

More on PeakSimple:

This Quick Start guide presents a very brief introduction to PeakSimple. There are tutorials in the manual and online at www.srigc.com (click on the "Download Our Documents" button) that will acquaint you with PeakSimple's basic functions.

If you have questions or problems, call SRI for free technical support at 310-214-5092, 8am - 5pm California time.